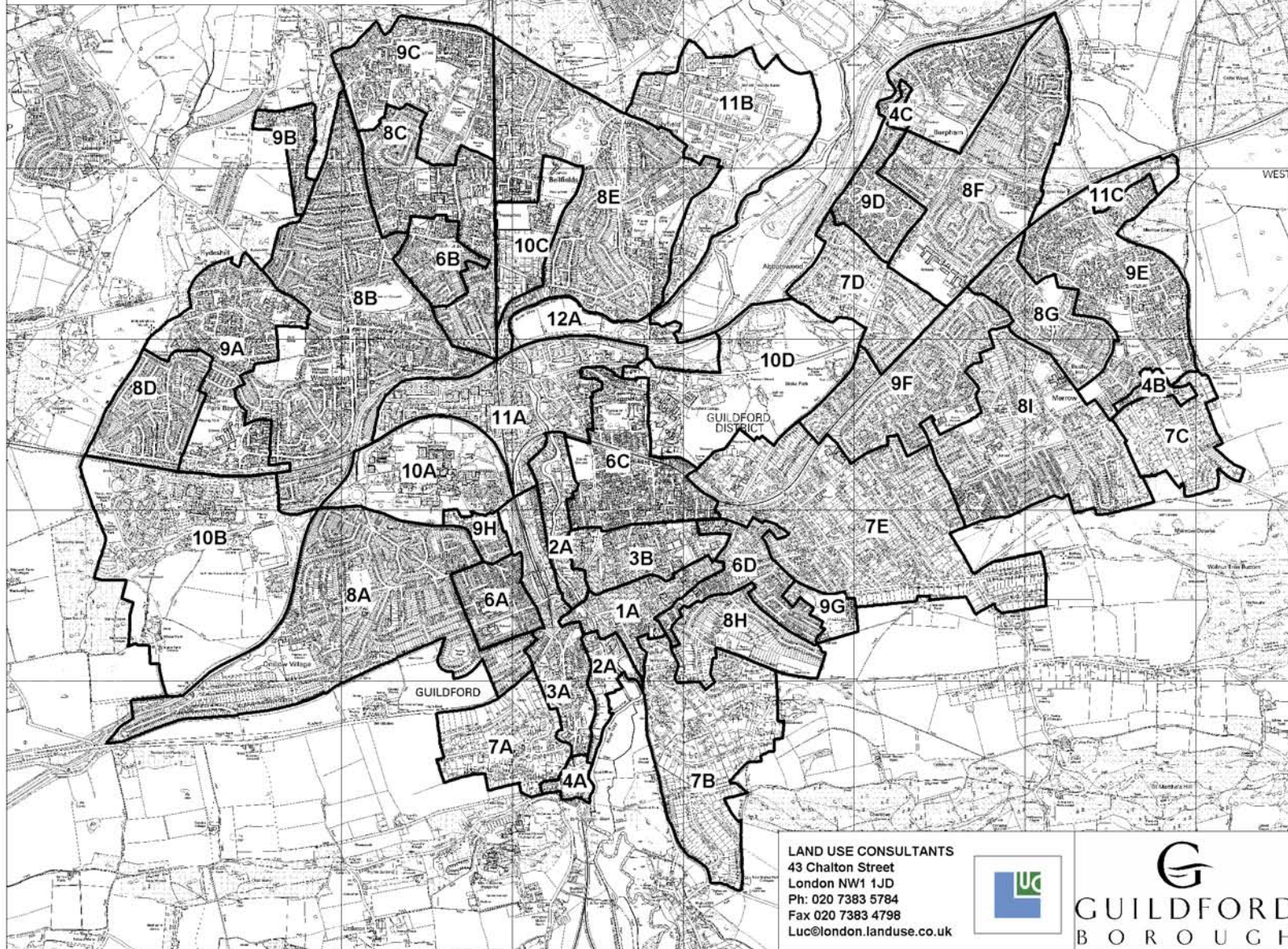


TOWNSCAPE CHARACTER AREAS IN GUILDFORD Figure 4.1



- Historic Core
 - 1A. Guildford Historic Core
- Settled River Corridor
 - 2A. Settled Wey Corridor
- Historic Fringes
 - 3A. West Guildford Historic Fringe
 - 3B. North Guildford Historic Fringe
- Historic Village Cores
 - 4A. St Catherine's
 - 4B. Merrow Village Centre
 - 4C. Burpham Village
- Victorian/Edwardian Suburbs
 - 6A. Farnham Road
 - 6B. Guildford Barracks
 - 6C. Stoke Fields
 - 6D. Charlottesville
- Garden Suburbs
 - 7A. Guildown
 - 7B. Warwicks Bench
 - 7C. Merrow
 - 7D. Abbotswood
 - 7E. Epsom Road
- Inter-war/Post-war Suburbs
 - 8A. Guildford Park/ Onslow Village
 - 8B. Westborough/ Woodbridge Hill
 - 8C. Stoughton
 - 8D. Park Barn
 - 8E. Bellfields
 - 8F. Burpham
 - 8G. Bushy Hill
 - 8H. Pewley Hill
 - 8I. Merrow
- Post 1960s Residential Estates
 - 9A. Park Barn/ Rydeshill
 - 9B. Chitty's
 - 9C. Queen Elizabeth Park
 - 9D. Burpham
 - 9E. Merrow Common
 - 9F. Boxgrove
 - 9G. St Luke's Square
- Institutional Buildings Associated with Open Space
 - 10A. University of Surrey
 - 10B. Royal Surrey County Hospital
 - 10C. Bellfields
 - 10D. Guildford College/ Stoke Park
- Industrial/Retail Parks
 - 11A. Woodbridge Industrial Estates
 - 11B. Slyfield Green
 - 11C. Merrow Common Industrial Estate
- Open River Floodplain
 - 12A. River Wey Open River Floodplain

LAND USE CONSULTANTS
43 Chalton Street
London NW1 1JD
Ph: 020 7383 5784
Fax 020 7383 4798
Luc@london.landuse.co.uk



This map is reproduced from Ordnance Survey material with the permission of Ordnance Survey on behalf of the Controller of Her Majesty's Stationery Office Crown Copyright. Unauthorised reproduction infringes Crown Copyright and may lead to prosecution or Civil proceedings. Guildford Borough Council, Licence No. 100019625,2004

This map is for identification purposes only and should not be relied upon for accuracy

Print Date: June 2006

Copyright GBC 2006