

# Ash South and Tongham Ward



## Legend

- Accessible Natural Green Space
- ANGS\_20ha\_2km
- Wards

## Guildford Open Space Study



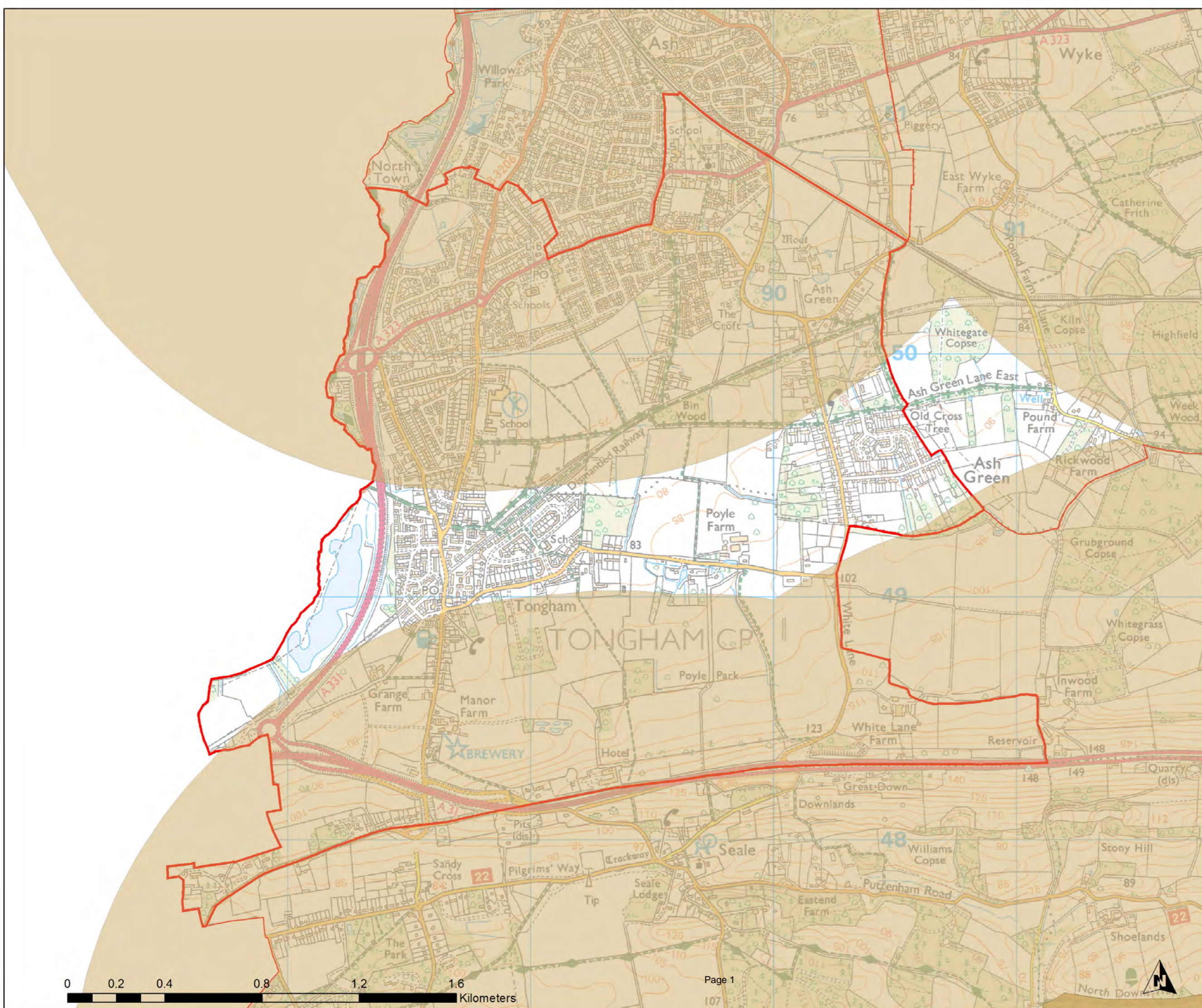
Scale: 1:14,105

Map produced on

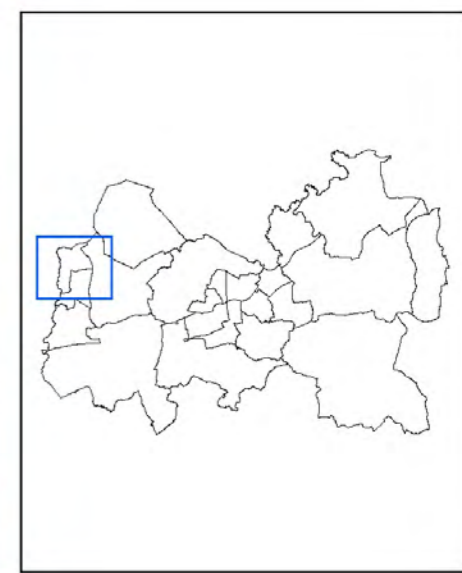
06/06/2017



© Crown Copyright and Database Rights 2017. Ordnance Survey. 100049046



Ash Vale Ward



**Legend**

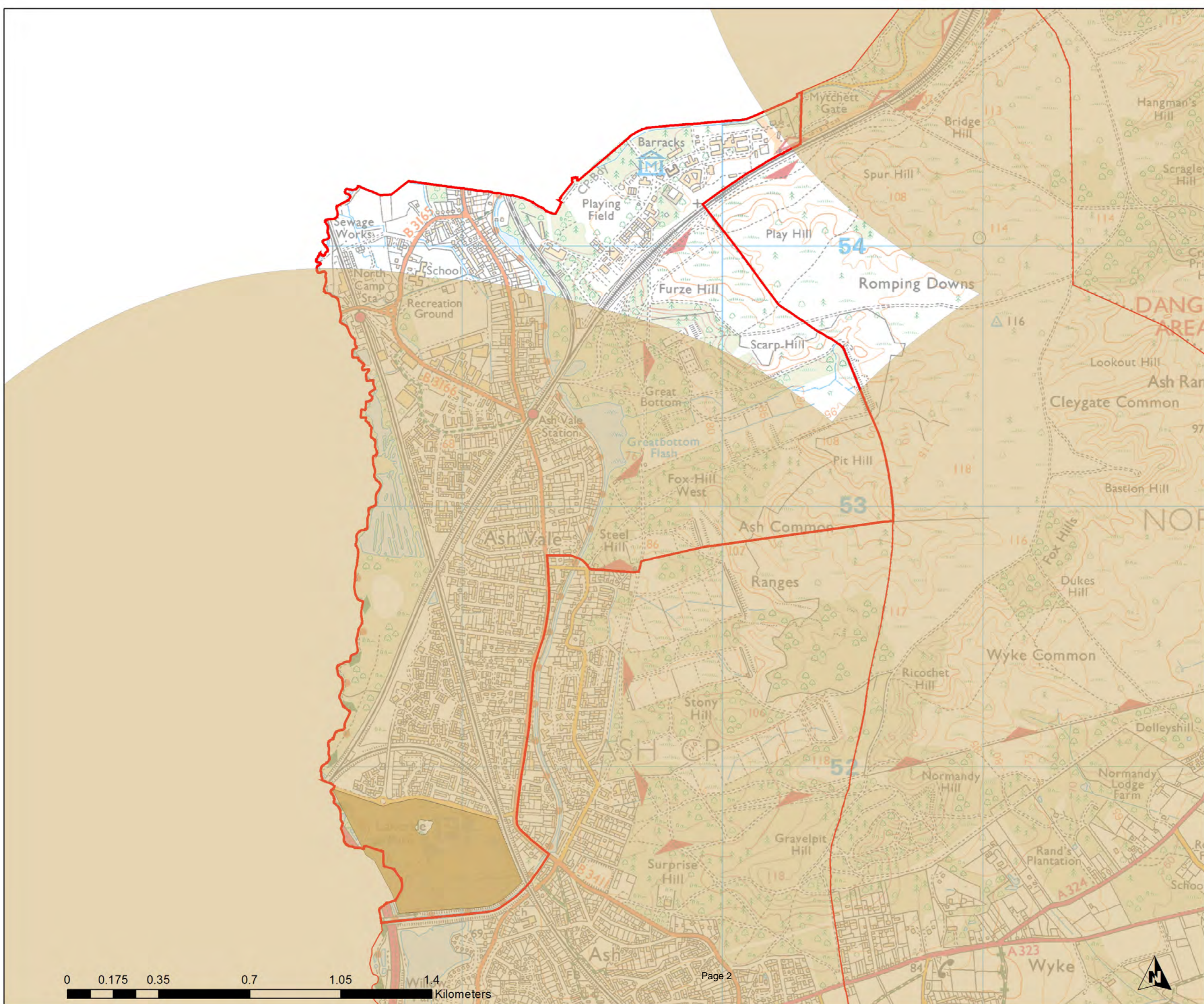
- Accessible Natural Green Space
- ANGS\_20ha\_2km
- Wards

**Guildford Open Space Study**

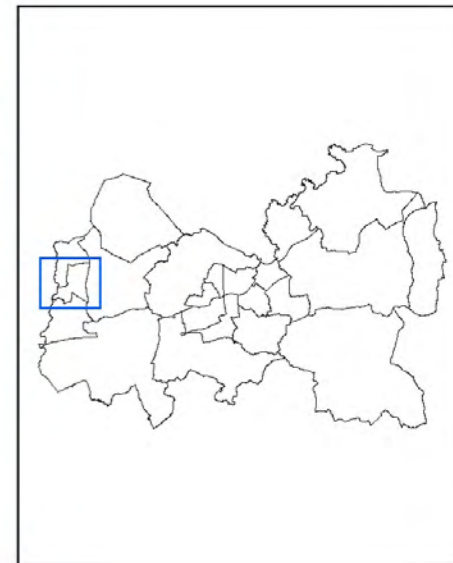
**Scale: 1:13,106**

Map produced on 06/06/2017

© Crown Copyright and Database Rights 2017. Ordnance Survey. 100049046



Ash Wharf Ward



Legend

- Accessible Natural Green Space
- ANGS\_20ha\_2km
- Wards

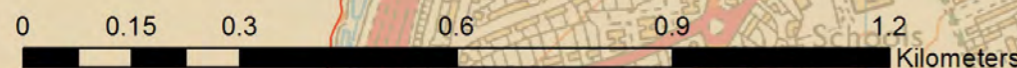
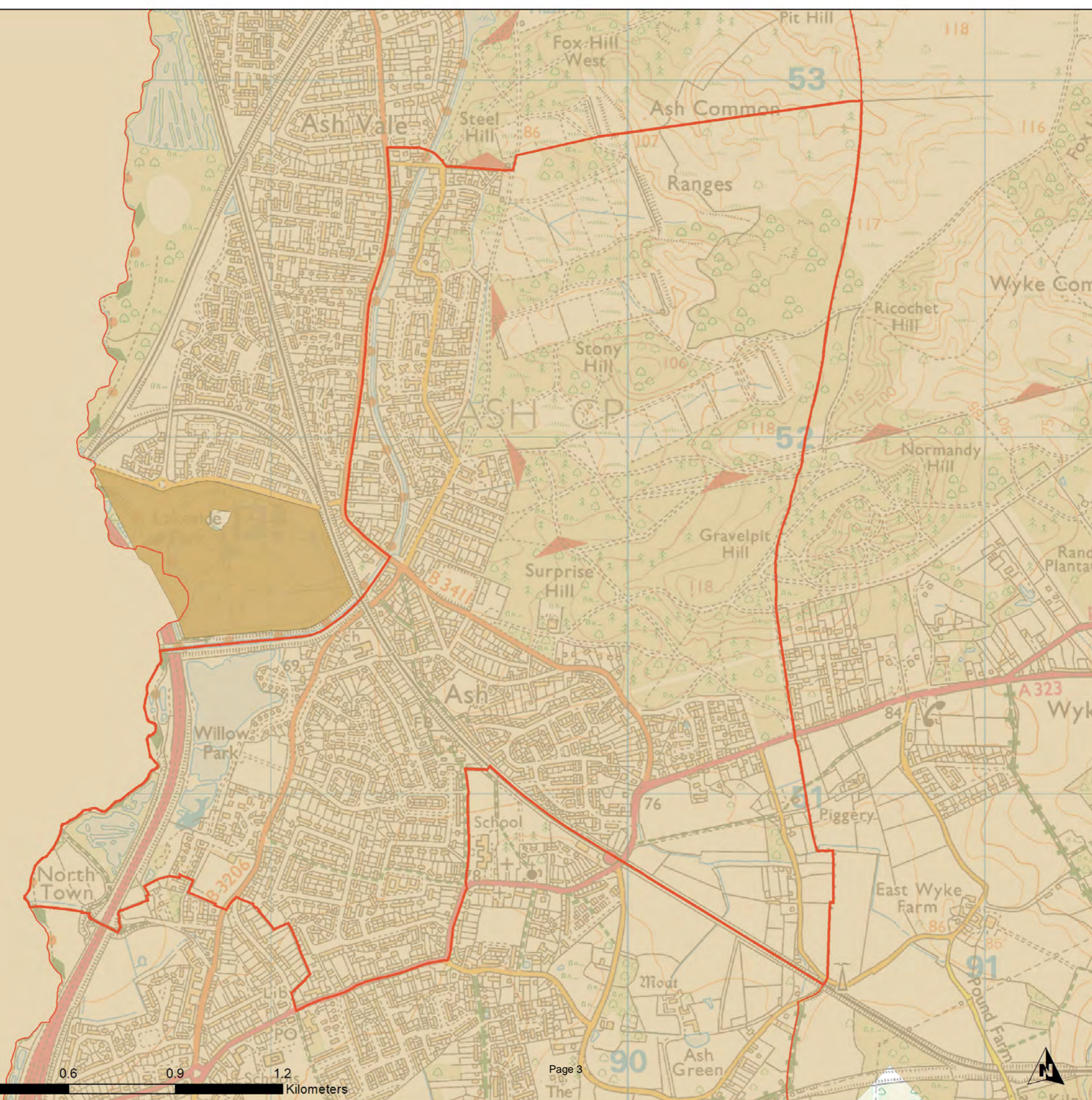
Guildford Open Space Study



Scale: 1:10,478

Map produced on

06/06/2017



Burpham Ward



**Legend**

- Accessible Natural Green Space
- ANGS\_20ha\_2km
- Wards

Guildford Open Space Study

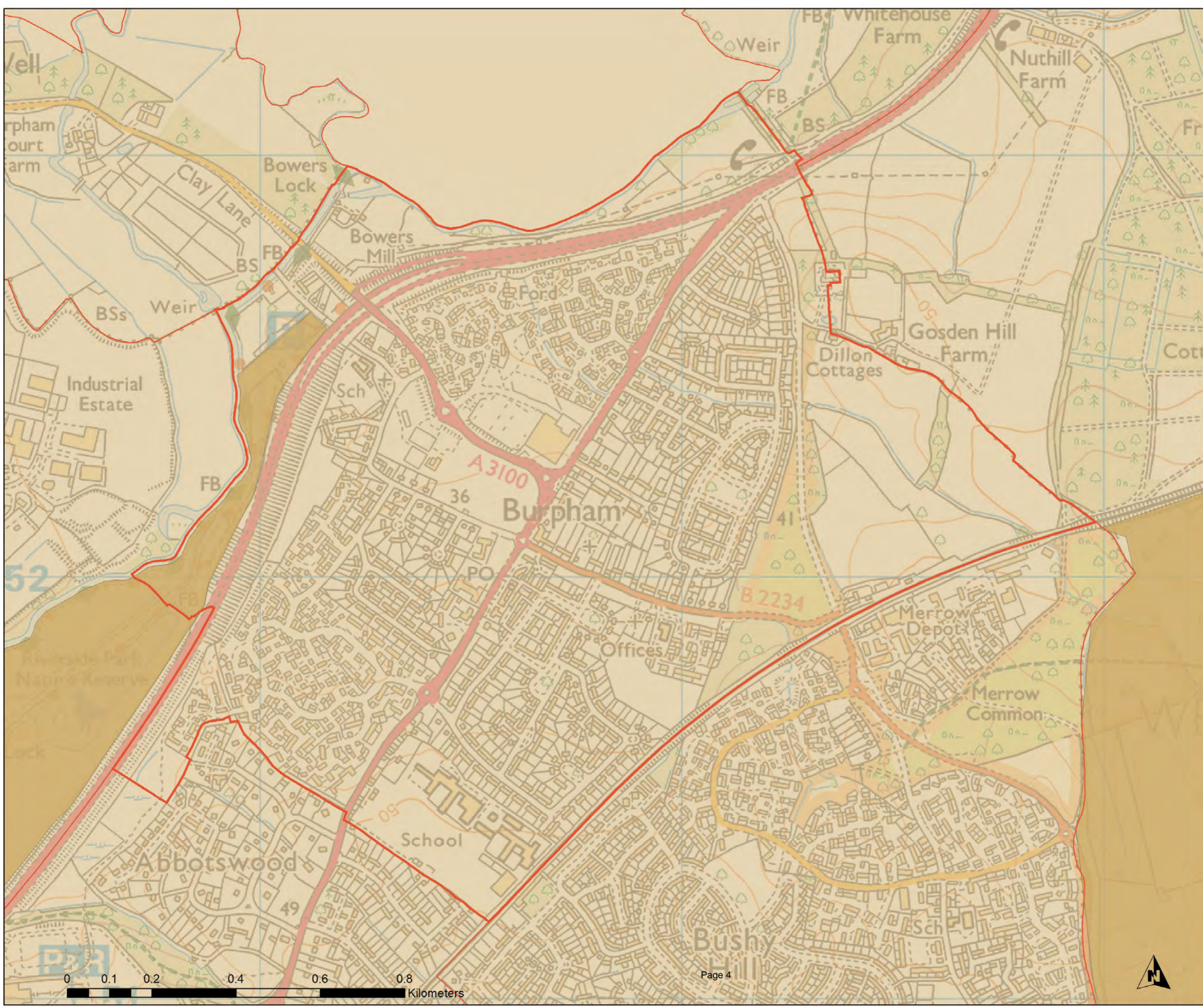


Scale: 1:8,084

Map produced on  
06/06/2017



© Crown Copyright and Database Rights 2017. Ordnance Survey. 100049046



Christchurch Ward



Legend

- Accessible Natural Green Space
- ANGS\_20ha\_2km
- Wards

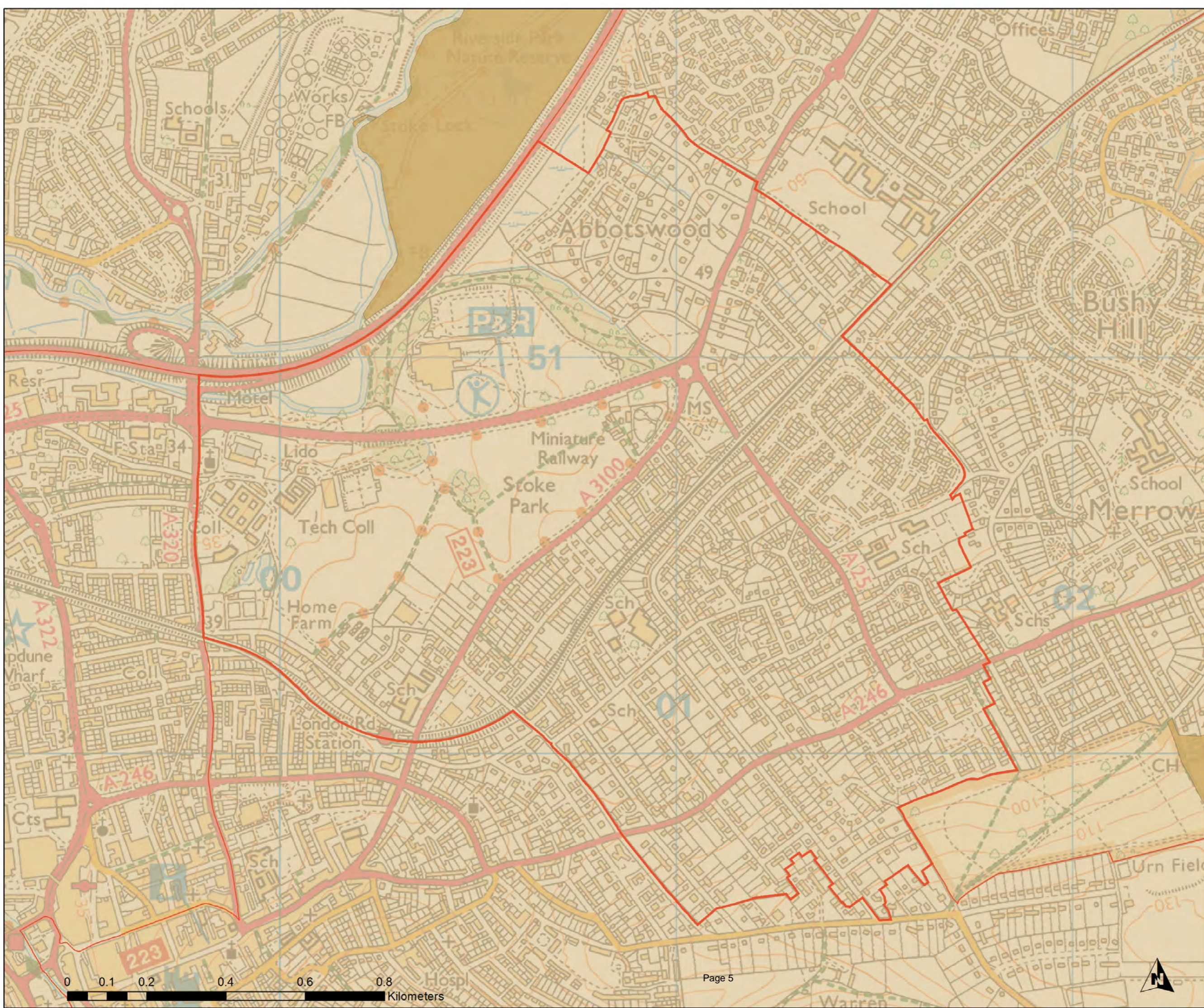
Guildford Open Space Study



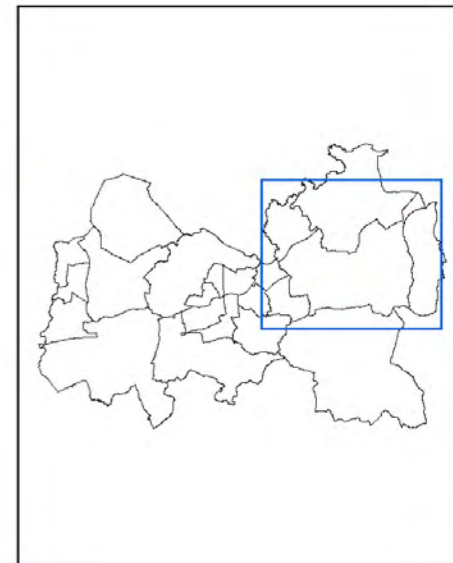
Scale: 1:8,631

Map produced on

06/06/2017



Clandon and Horsley Ward



Legend

- Accessible Natural Green Space
- ANGS\_20ha\_2km
- Wards

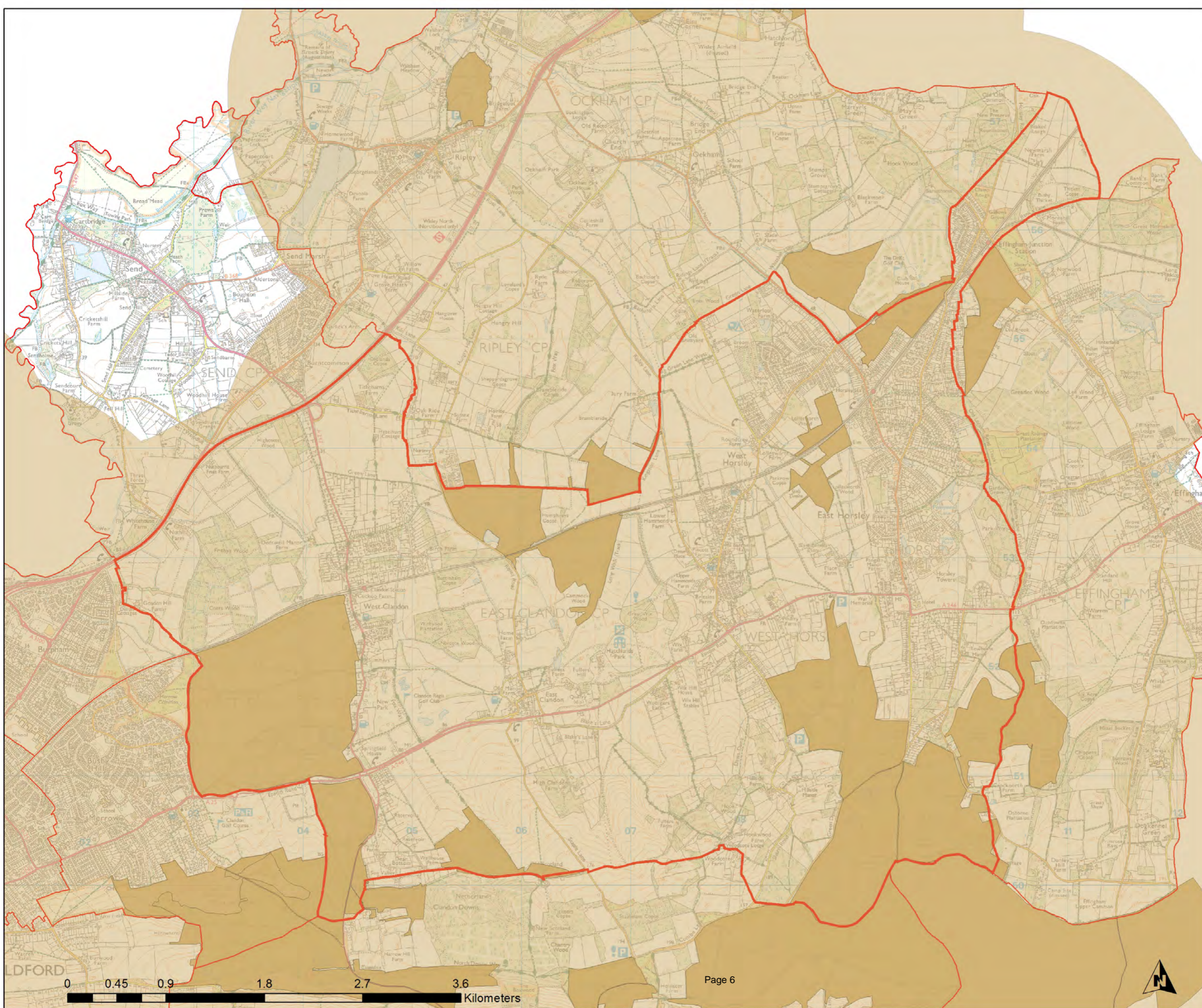
Guildford Open Space Study



Scale: 1:31,378

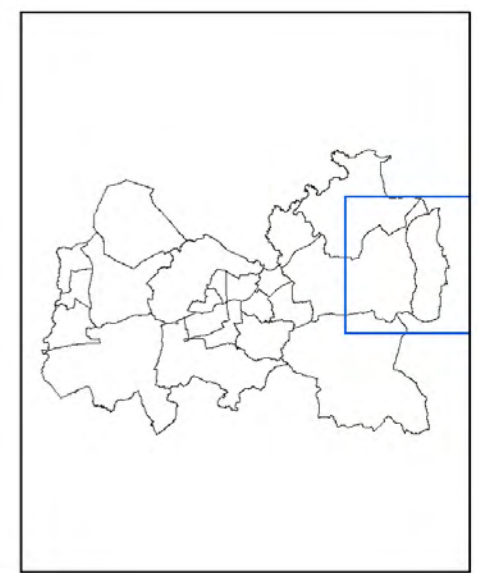
Map produced on

06/06/2017





**Effingham Ward**



**Legend**

- Accessible Natural Green Space
- ANGS\_20ha\_2km
- Wards

**Guildford Open Space Study**



Scale: **1:28,832**

Map produced on **06/06/2017**




**Friary and St Nicolas Ward**



**Legend**

- Accessible Natural Green Space
- ANGS\_20ha\_2km
- Wards

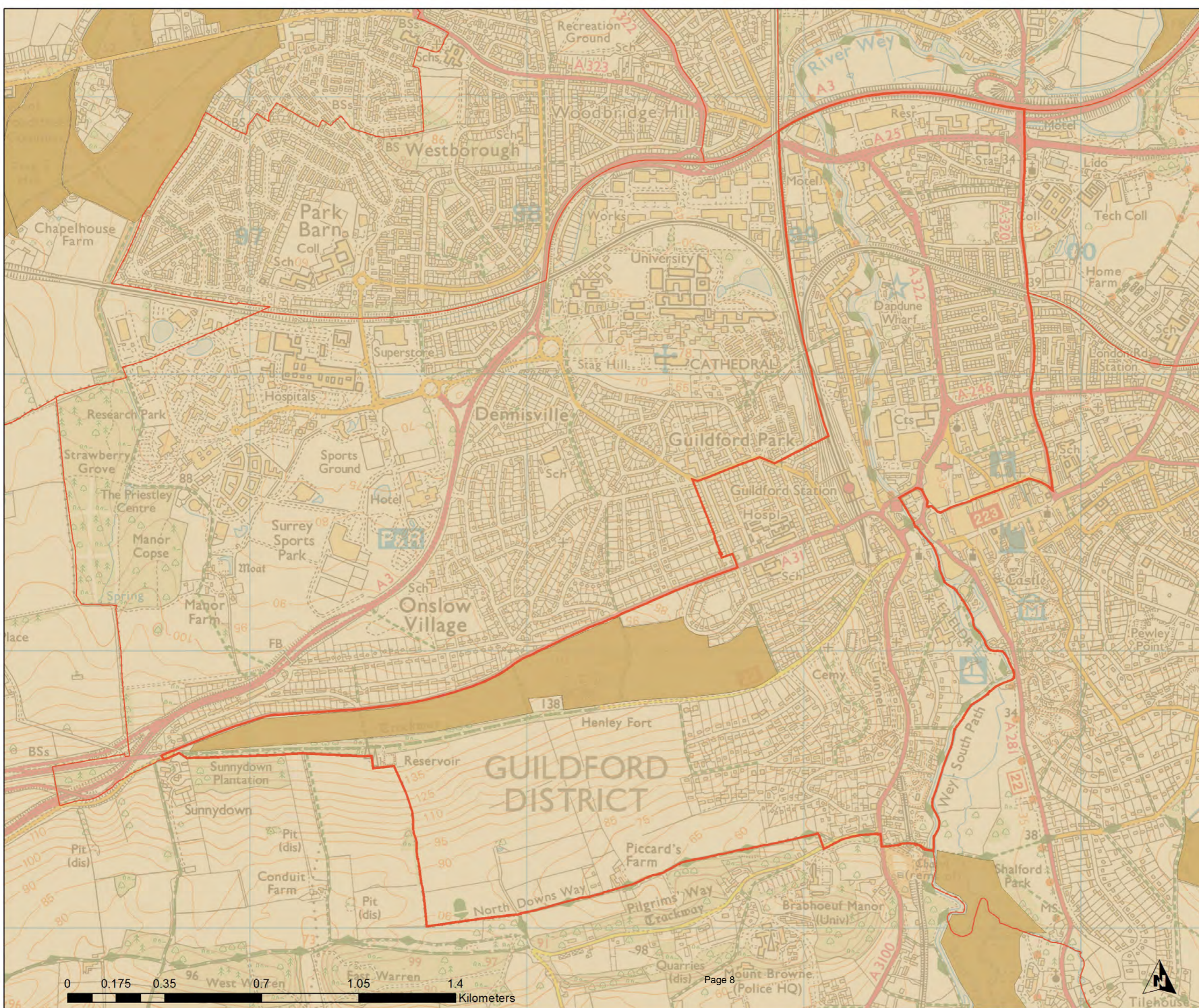
**Guildford Open Space Study**



Scale: **1:12,365**

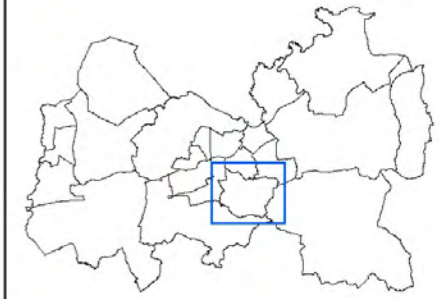
Map produced on

06/06/2017





Holy Trinity Ward



Legend

- Accessible Natural Green Space
- ANGS\_20ha\_2km
- Wards

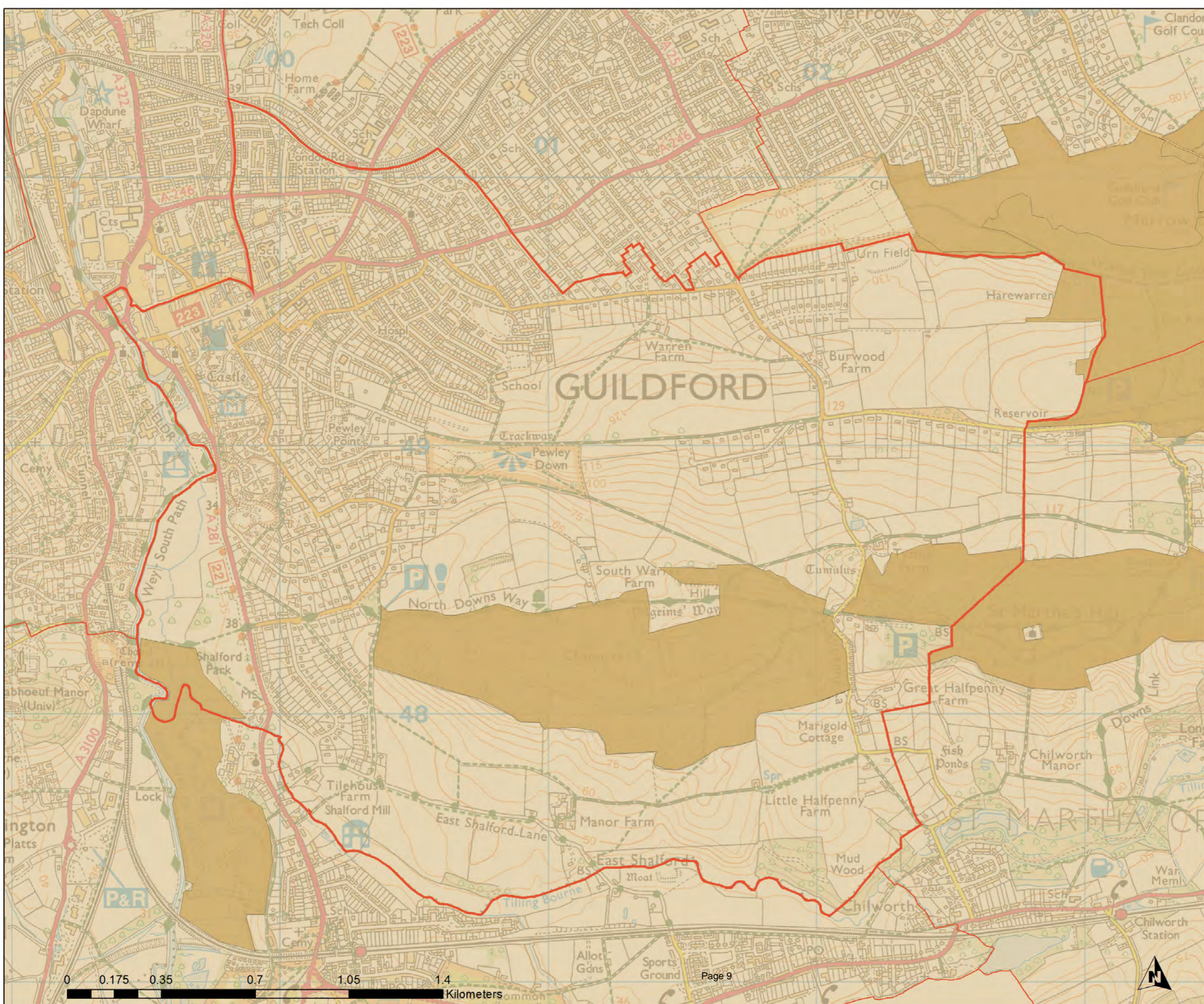
Guildford Open Space Study



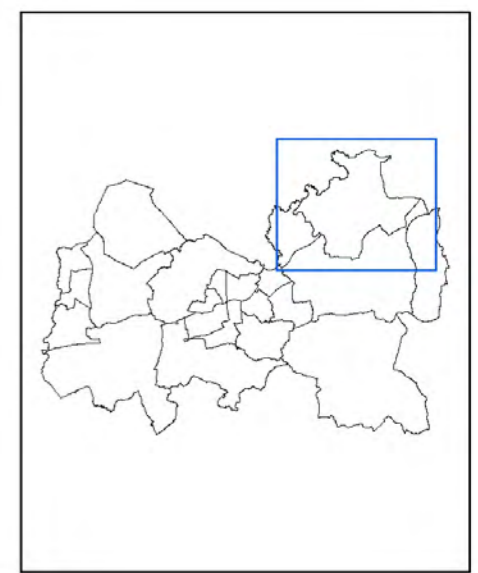
Scale: 1:12,722

Map produced on

06/06/2017



Lovelace Ward



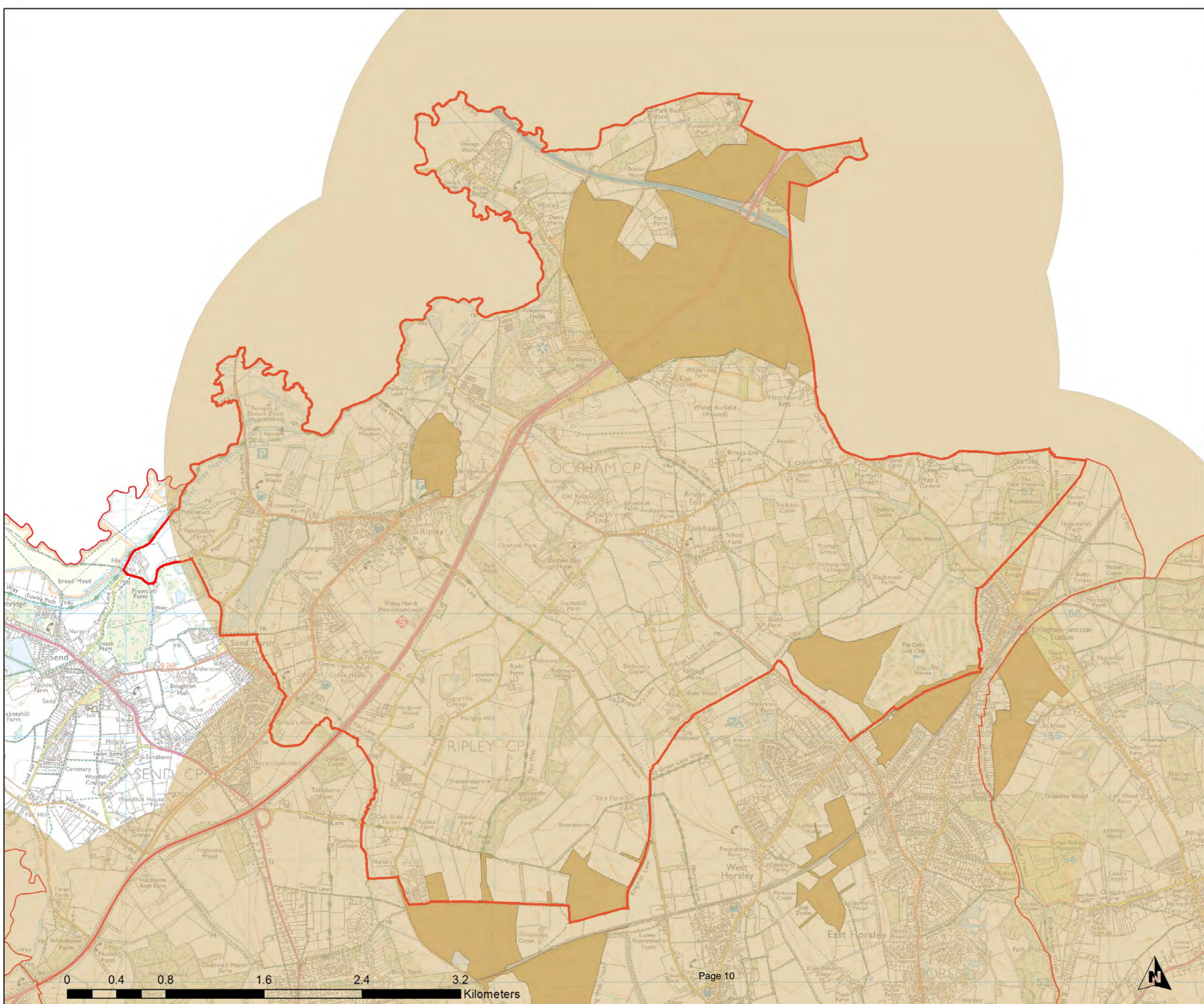
**Legend**

- Accessible Natural Green Space
- ANGS\_20ha\_2km
- Wards

**Guildford Open Space Study**

**Scale: 1:27,775**




Map produced on 06/06/2017



**Merrow Ward**



**Legend**

-  Accessible Natural Green Space
-  ANGS\_20ha\_2km
-  Wards

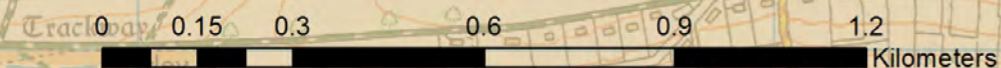
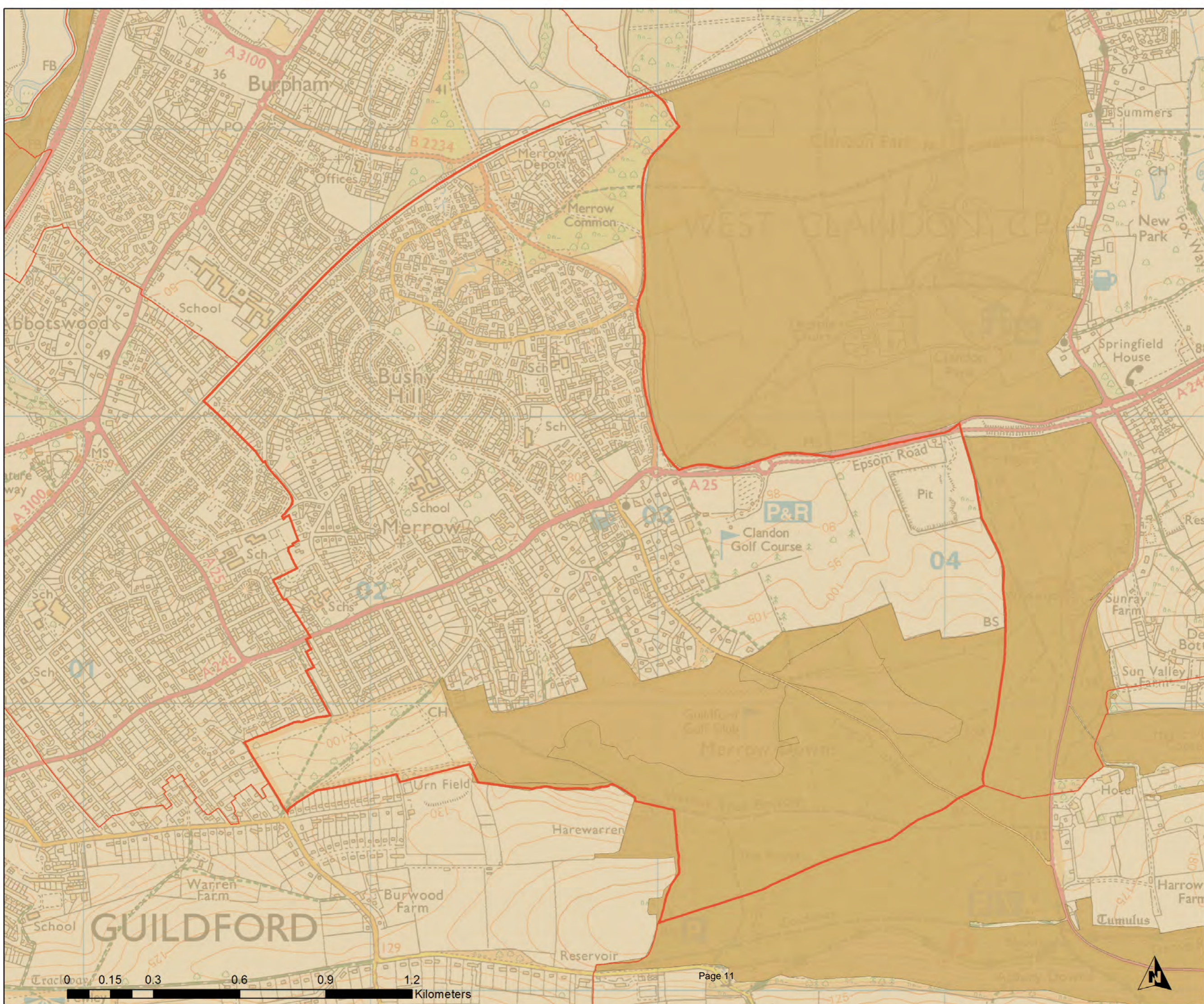
**Guildford Open Space Study**



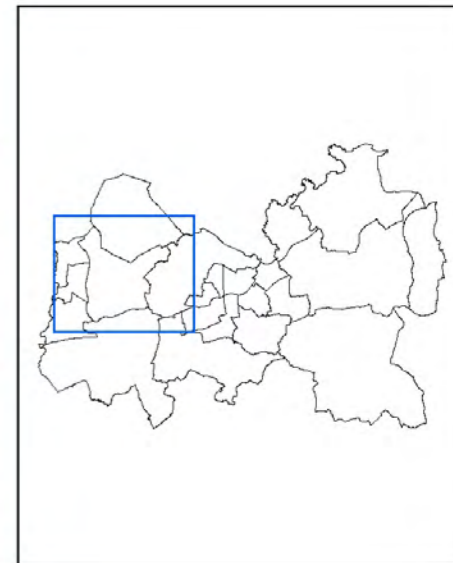
Scale: **1:11,887**

Map produced on

06/06/2017



# Normandy Ward



## Legend

- Accessible Natural Green Space
- ANGS\_20ha\_2km
- Wards

## Guildford Open Space Study



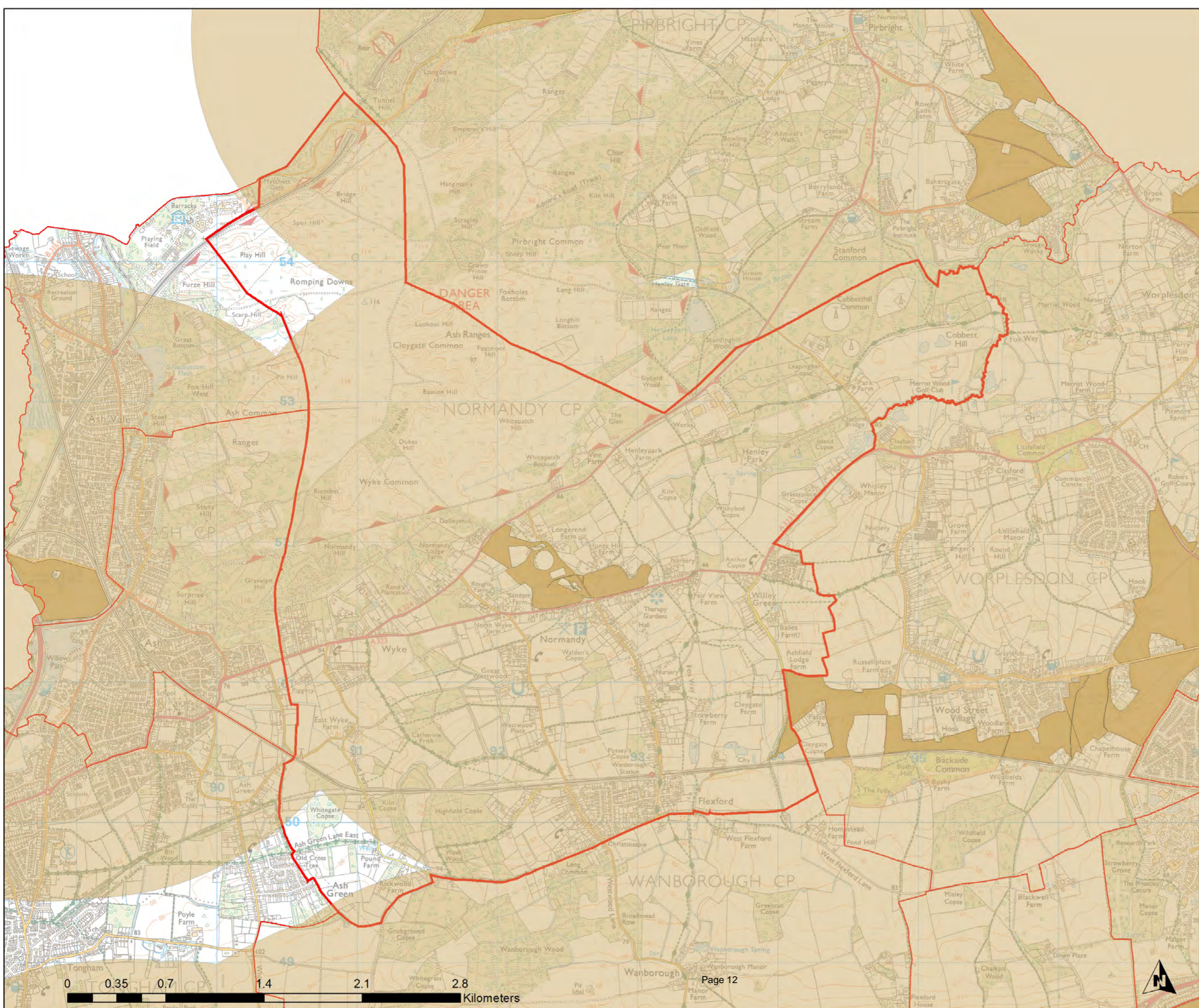
Scale: 1:24,435

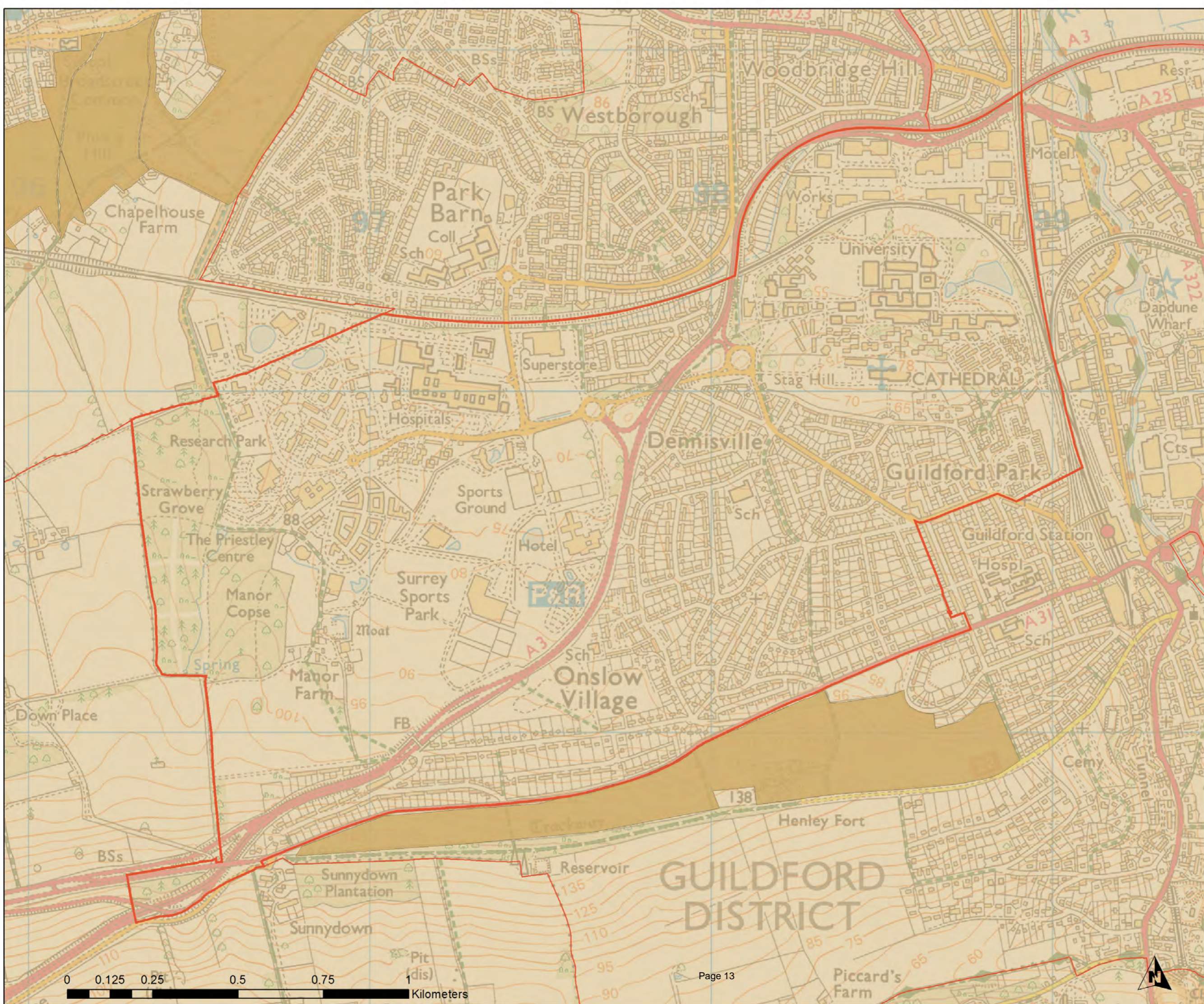
Map produced on

06/06/2017



© Crown Copyright and Database Rights 2017. Ordnance Survey. 100049046






**Onslow Ward**



**Legend**

- Accessible Natural Green Space
- ANGS\_20ha\_2km
- Wards

**Guildford Open Space Study**



**GUILDFORD BOROUGH**

Scale: **1:10,000**

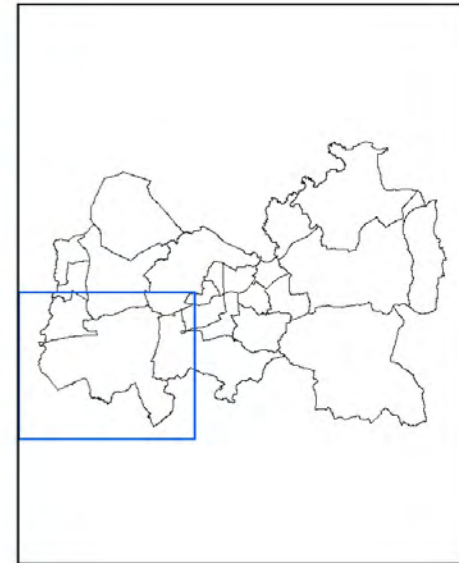
Map produced on **06/06/2017**



© Crown Copyright and Database Rights 2017. Ordnance Survey. 100049046

0 0.125 0.25 0.5 0.75 Kilometers

Pilgrims Ward



Legend

- Accessible Natural Green Space
- ANGS\_20ha\_2km
- Wards

Guildford Open Space Study



Scale: 1:30,867

Map produced on

06/06/2017



Pirbright Ward



Legend

- Accessible Natural Green Space
- ANGS\_20ha\_2km
- Wards

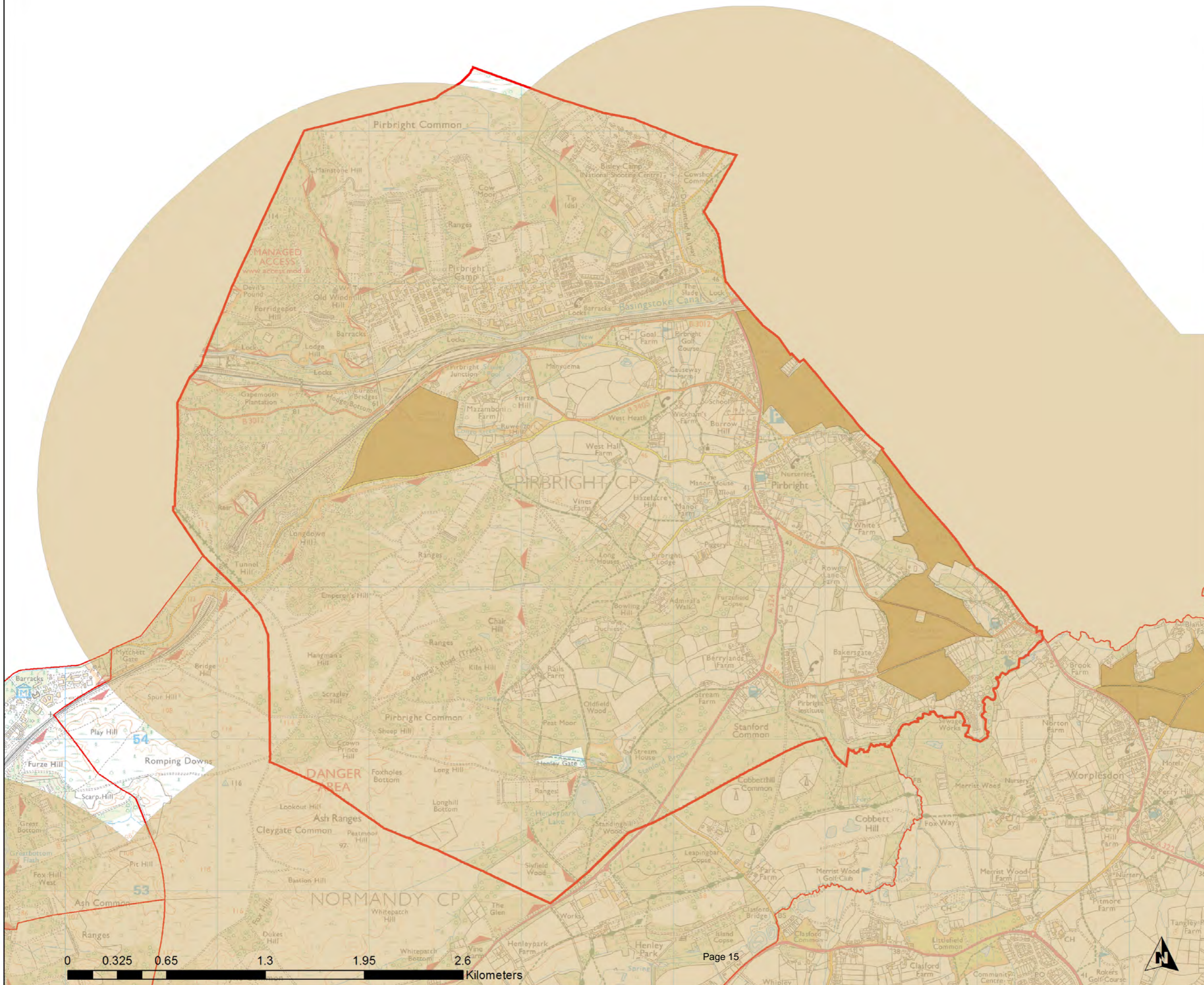
Guildford Open Space Study



Scale: 1:22,588

Map produced on

06/06/2017



Send Ward



**Legend**

- Accessible Natural Green Space
- ANGS\_20ha\_2km
- Wards

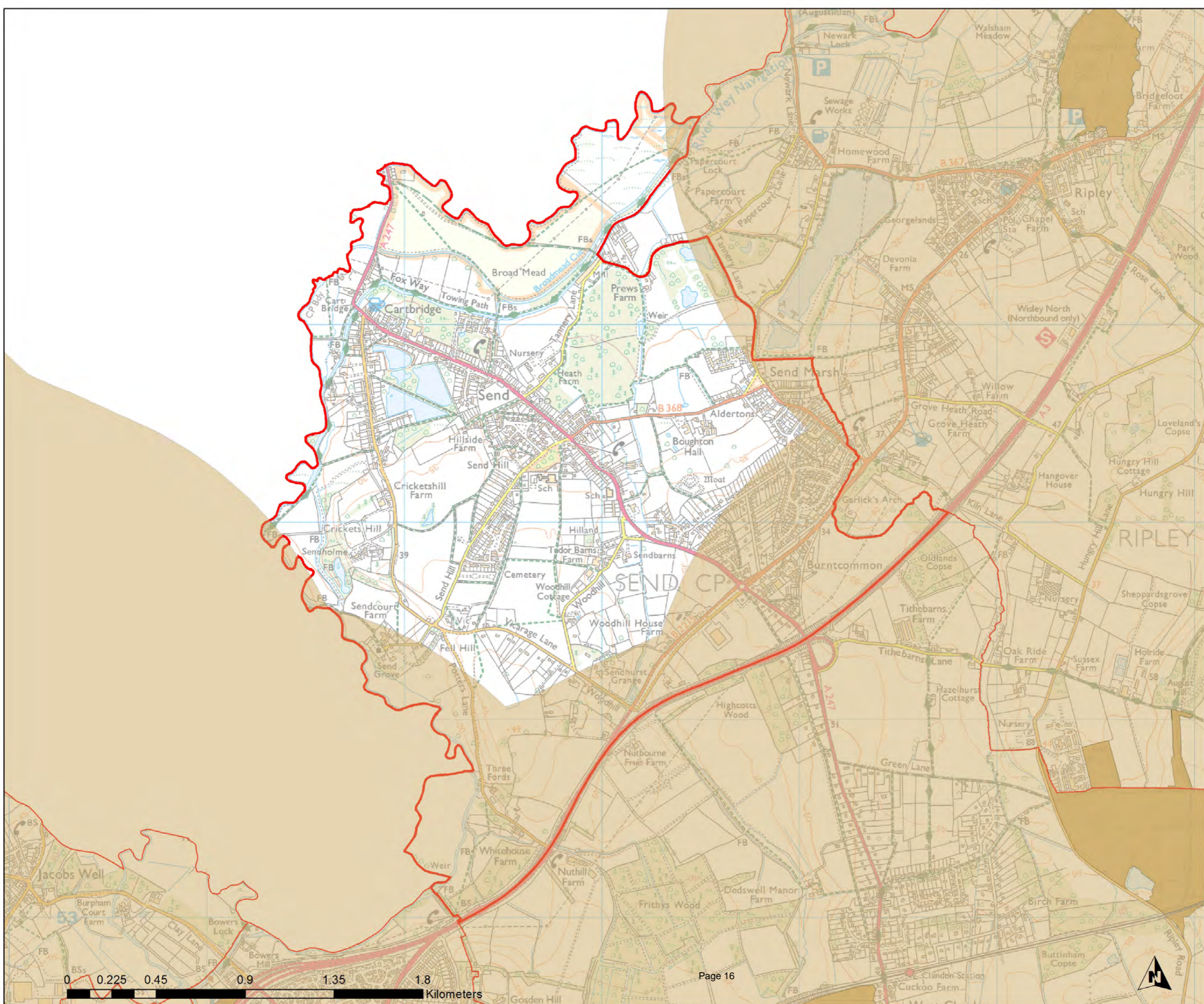
**Guildford Open Space Study**



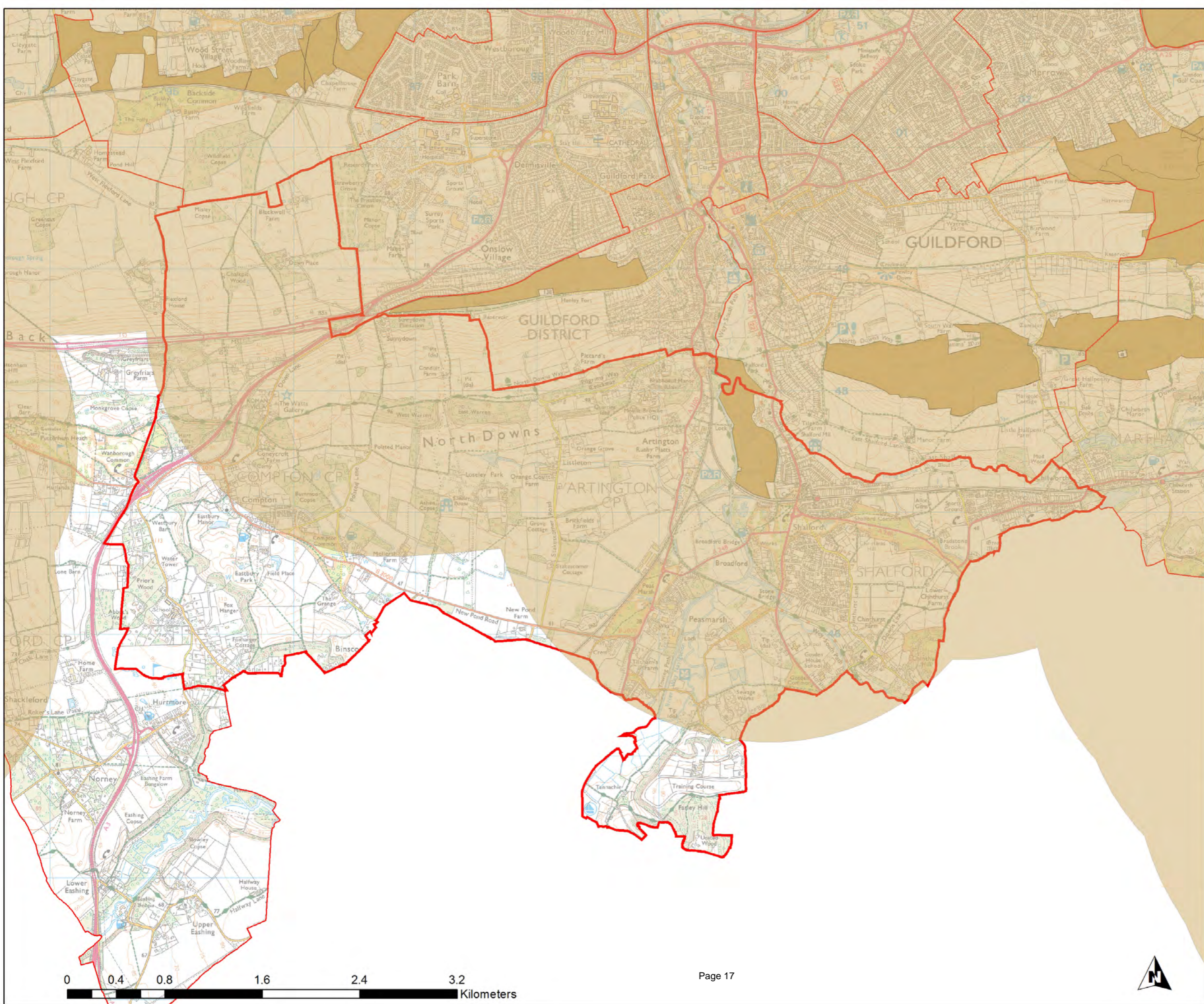
Scale: **1:17,276**

Map produced on

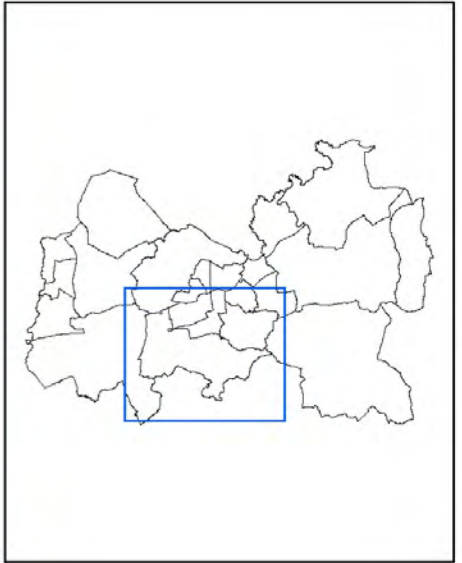
06/06/2017







**Shalford Ward**



**Legend**

- Accessible Natural Green Space
- ANGS\_20ha\_2km
- Wards

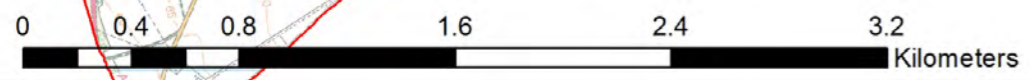
**Guildford Open Space Study**

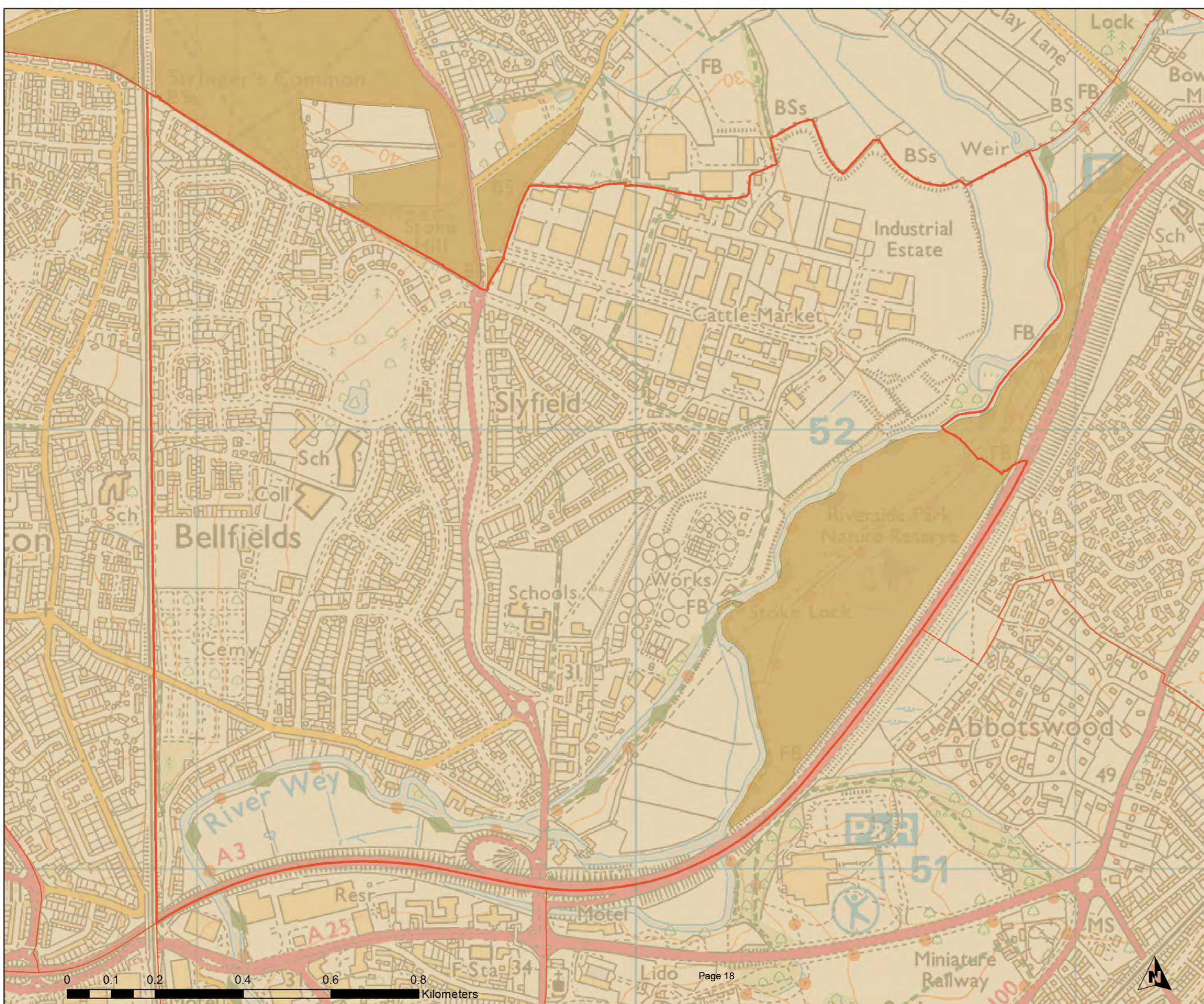


**GUILDFORD BOROUGH**

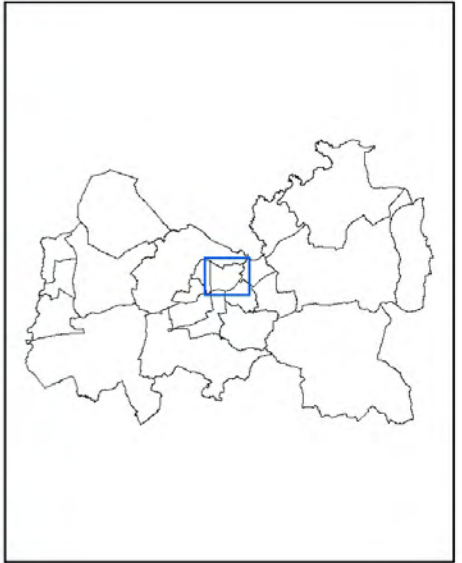
Scale: **1:28,022**

Map produced on **06/06/2017**



**Stoke Ward**



**Legend**

- Accessible Natural Green Space
- ANGS\_20ha\_2km
- Wards

**Guildford Open Space Study**



GUILDFORD BOROUGH

Scale: **1:7,769**

Map produced on **06/06/2017**




Stoughton Ward



Legend

- Accessible Natural Green Space
- ANGS\_20ha\_2km
- Wards

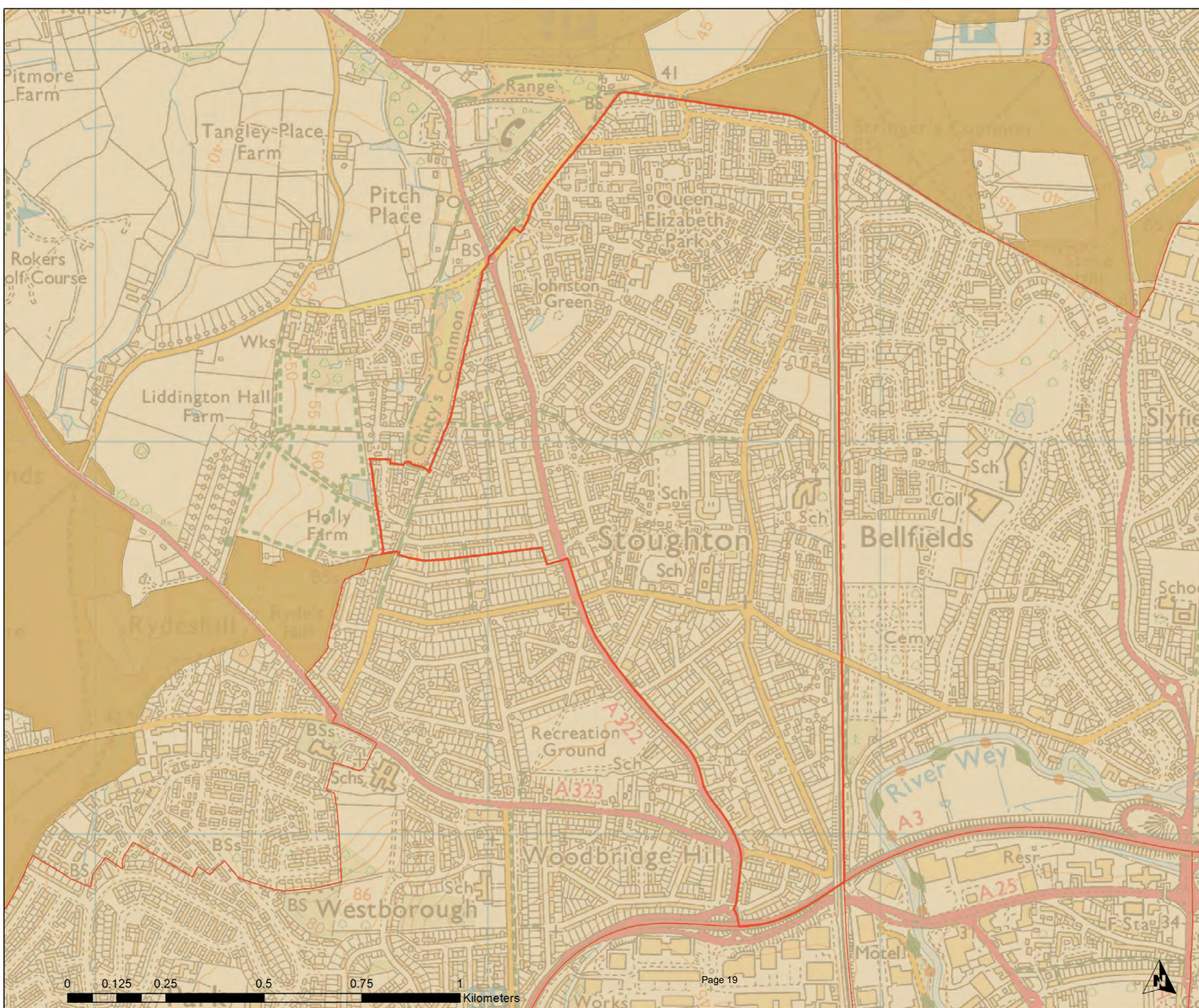
Guildford Open Space Study



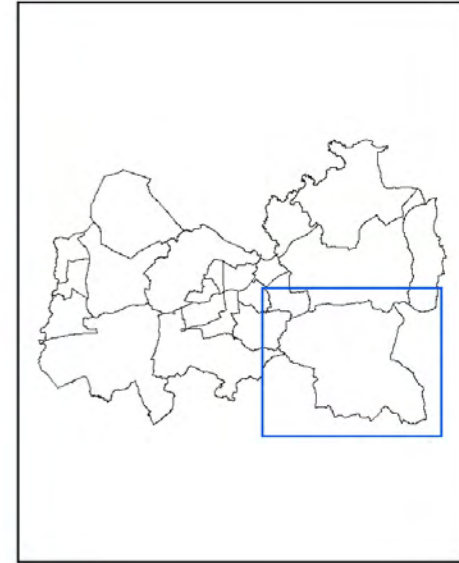
Scale: 1:8,733

Map produced on

06/06/2017



Tillingbourne Ward



Legend

- Accessible Natural Green Space
- ANGS\_20ha\_2km
- Wards

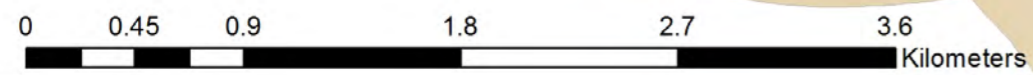
Guildford Open Space Study



Scale: 1:31,333

Map produced on

06/06/2017



Westborough Ward



Legend

- Accessible Natural Green Space
- ANGS\_20ha\_2km
- Wards

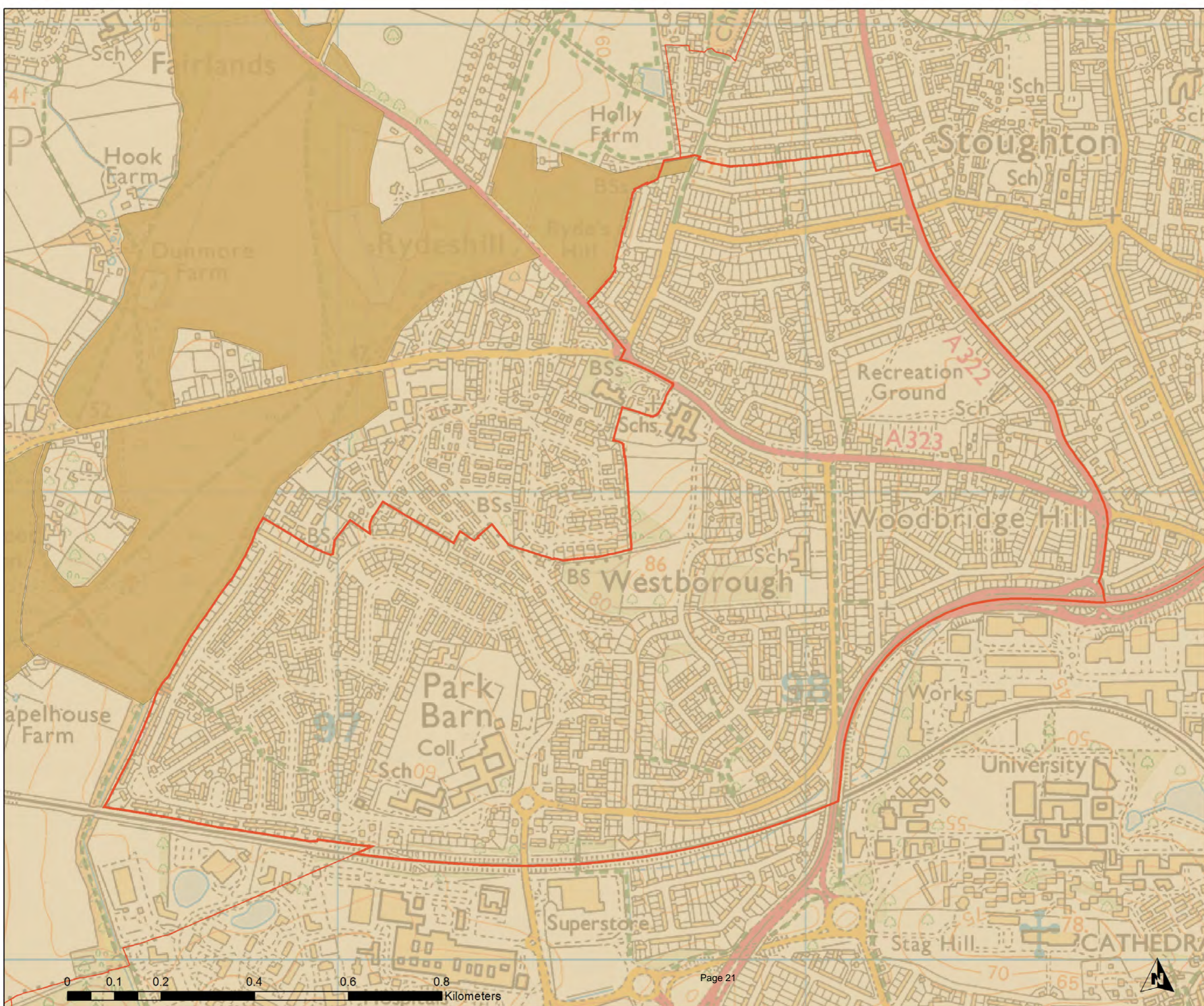
Guildford Open Space Study



Scale: 1:7,312

Map produced on

06/06/2017



**Worplesdon Ward**



**Legend**

- Accessible Natural Green Space
- ANGS\_20ha\_2km
- Wards

**Guildford Open Space Study**



Scale: **1:24,835**

Map produced on

06/06/2017

