

# Ash Road Bridge

## Welcome

Welcome to our Public Information Event. The information on display provides an overview of the scheme which has developed through consultation. Please take the opportunity to read about our proposals, ask the project team questions and complete the feedback form provided.

### Why is the road bridge needed?

It will:

- Improve safety for drivers, pedestrians and cyclists by removing the hazard posed by the present level crossing
- Remove delays for the local community by easing traffic congestion
- Help reduce traffic cutting through inappropriate residential and rural roads to avoid the level crossing
- Alleviate increased traffic from current housing developments in Ash and Tongham
- Support Guildford Borough Council's emerging Local Plan and proposed housing requirements



	Copperwood Developments		Persimmon Homes		Road Bridge embankment (earthworks)
	Ellsworth Park		Foreman Manor		

Guildford Borough Council is proposing to construct a road bridge with a footway, shared footway / cycleway, and to undertake highway improvement works.

The road bridge will pass over the North Downs Line (south of the Ash Level Crossing) and will connect the Guildford Road / Ash Hill Road roundabout to a new junction with Foreman Road. The A323 Guildford Road will be diverted along this new road.

Subject to securing planning consent for the scheme, construction is expected to begin in spring 2020 with completion of the road bridge targeted by 2021.

Following construction of the road bridge, a separate footbridge is also planned for the Ash Level Crossing.

Ash Level Crossing will remain open until both schemes have been constructed.

[www.guildford.gov.uk](http://www.guildford.gov.uk)

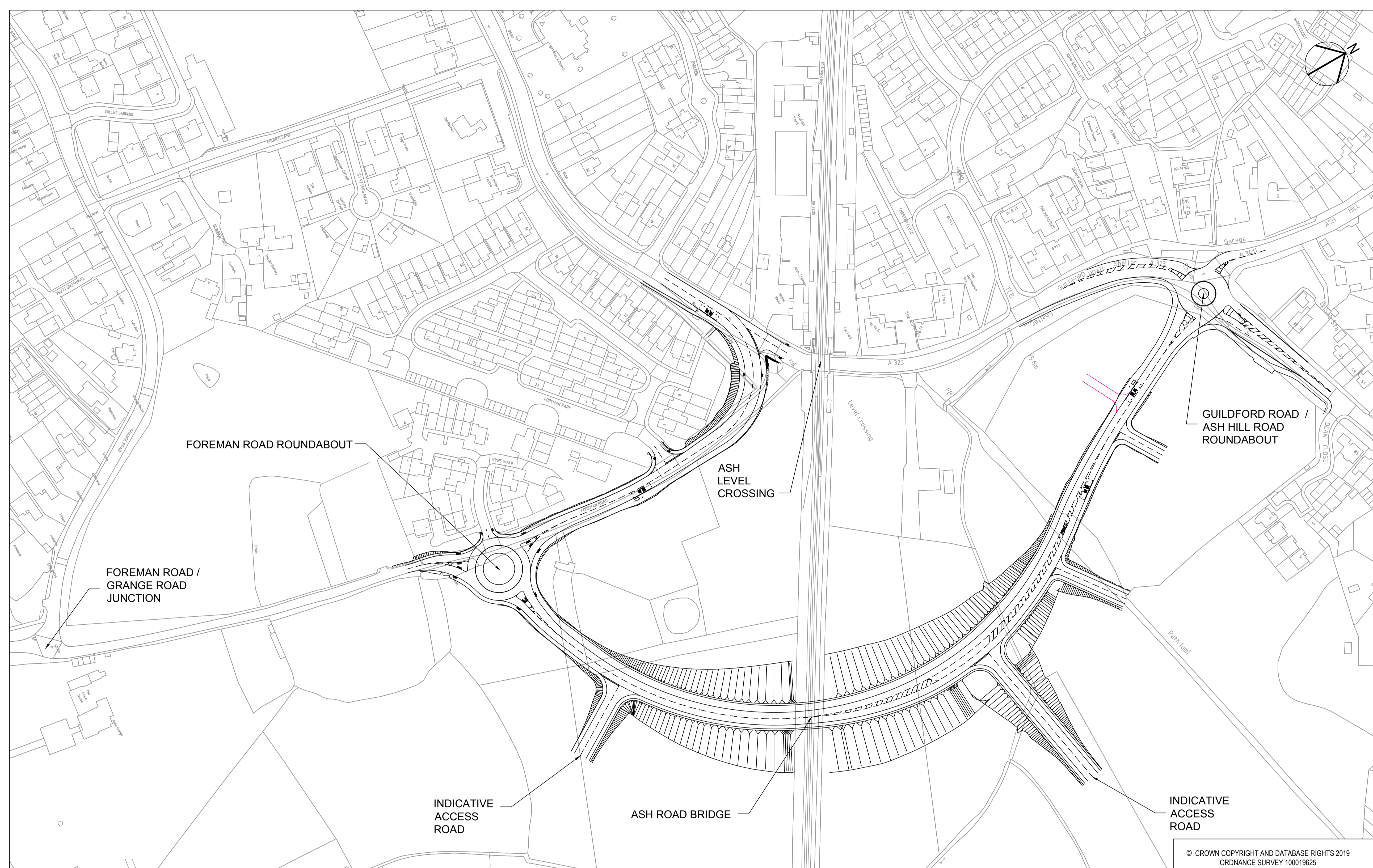


GUILDFORD  
BOROUGH



# Ash Road Bridge

## New bridge and new road connections



Proposed Ash Road Bridge layout

The scheme – which is still subject to final design – will include the construction of a new road bridge over the railway line to the south of Ash Station.

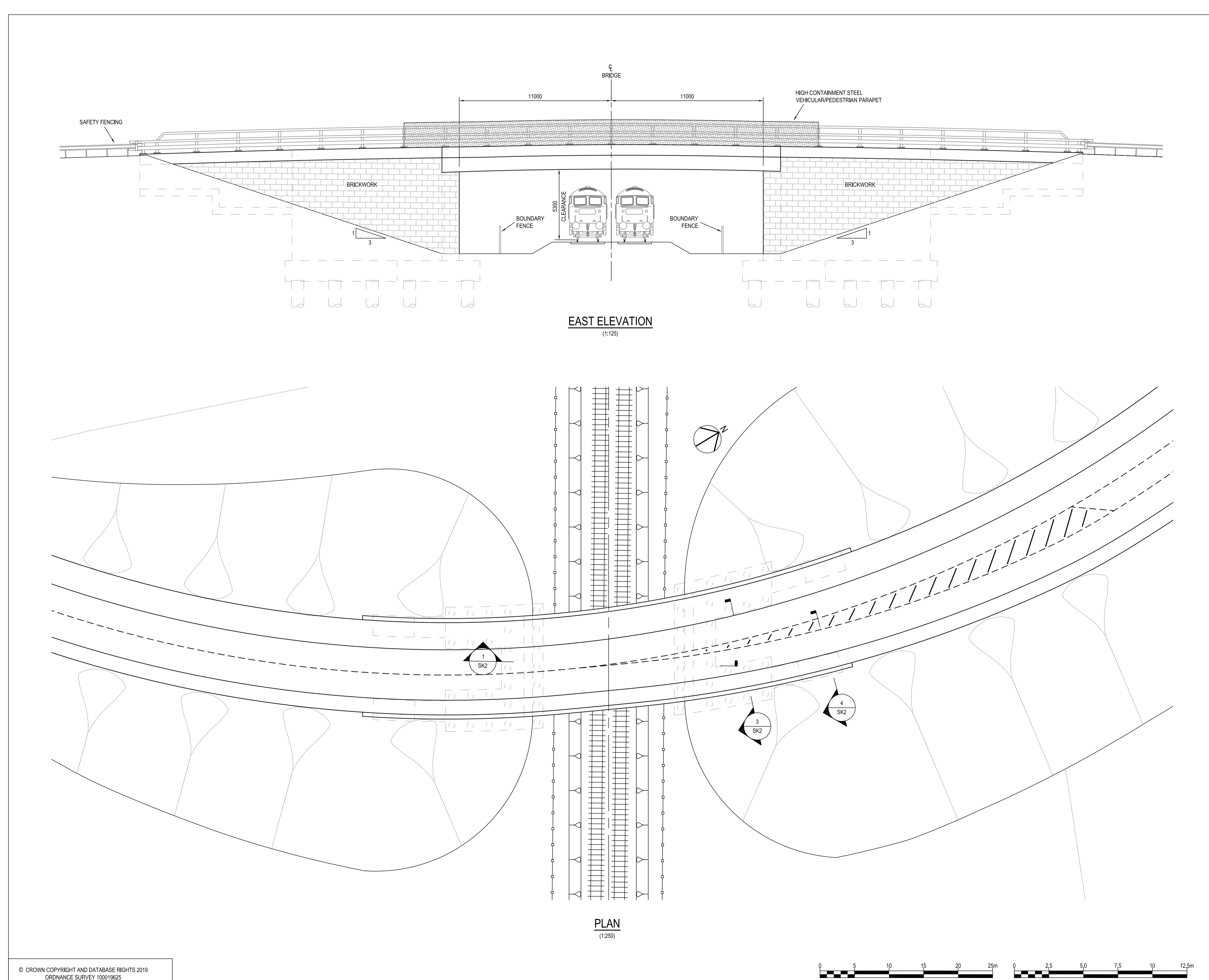
The road bridge will cross over the railway line at a maximum width of 19 metres, with a clearance of 5.3 metres (maximum) between the railway tracks and underside of the bridge.

A 3 metre shared cycleway and footway will be provided on the northern side of the new road alignment, with a 2 metre footway on the southern side of the carriageway.

As part of the scheme, a new roundabout is proposed on Foreman Road, which will connect to the access to the new Ellsworth Park development (approximately 260 metres north of Grange Road), whilst the Guildford Road / Ash Hill Road roundabout will be upgraded to a four arm roundabout.

Foreman Road (between Guildford Road and the Ellsworth Park development adjacent to Foreman Park) will also be widened to 7.3 metres.

Once the new road bridge is opened, the A323 will be diverted over the new bridge. The speed limit along the route will be 30 mph.



Proposed Ash Road Bridge cross section



# Ash Road Bridge

## Planning context

Land surrounding the proposed bridge has been allocated for housing, having been identified as a strategic location for development. This infrastructure scheme is an essential component of the emerging Local Plan, helping to mitigate the impact of the allocation for 1,750 homes for the site - some of which is already committed.

The Local Plan objectives are to:

- create infrastructure
- make travel easier by reducing congestion now and in the future
- improve safety on the road and rail network for vehicles, pedestrians and cyclists
- support communities
- support and unlock land for quicker delivery of housing

**Ash Level Crossing currently closes 150 times a day for up to 25 minutes each hour.**

**Policy A29 of the emerging Guildford Local Plan has been through Examination Hearings and has progressed through consultation on Main Modifications. No changes have been proposed to the following wording within 'Policy A29: Land to the south and east of Ash and Tongham', which requires:**

**"Land and provision of a new road bridge which will form part of the A323 Guildford Road, with an associated footbridge, to enable the closure of the level crossing on the A323 Guildford Road, adjacent to Ash railway station."**

## Engagement to date

The principle of the road bridge has been included in two rounds of public consultation on the Local Plan, which took place in 2016 and 2017.

Following review of the comments received during the consultation, Guildford Borough Council has had subsequent positive discussions with the Ash Forum and various local land owners and developers potentially impacted by the road/bridge. This has informed the subsequent design work and preferred route for the scheme.

For more information on the January, April and October 2018 Ash Forum meetings – including future dates – visit: <https://guildford.gov.uk/ashforum>

### Scheme funding

**The scheme has provisionally secured £10 million of funding from Homes England and £2.5 million from Network Rail. Guildford Borough Council is seeking to secure further contributions from Surrey County Council and Section 106 contributions from housing developers.**



Indicative cross section of landscaping for proposed Ash Road Bridge scheme



# Ash Road Bridge

## Ash Level Crossing and Footbridge

The Ash Level Crossing has been identified as a key constraint on the highway network. It is also considered a safety risk by Network Rail and there have been a number of incidents where vehicles and pedestrians have misused the crossing.

Delivery of the new road bridge will mean the level crossing can be closed because the road bridge will create a new connection across the North Downs Line.

Following construction of the road bridge, a separate footbridge is also planned. The footbridge will be accessible to all users.

The level crossing will not be closed to non-motorised users until a footbridge is in place.

**An application for the footbridge and for the closure of the level crossing will be submitted at a later date.**



Ash Level Crossing (looking south west)

### Ash Footbridge – Indicative project timeline:

SUMMER 2019:

Submission of planning application for Ash Footbridge

SUMMER 2021:

Construction (subject to completion of Ash Road Bridge)

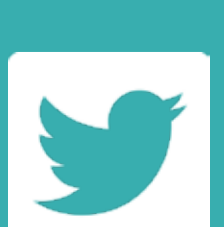
AUTUMN 2021:

Opening of footbridge and permanent closure of the level crossing



North Downs Line (Ash Level Crossing looking south east)

[www.guildford.gov.uk](http://www.guildford.gov.uk)



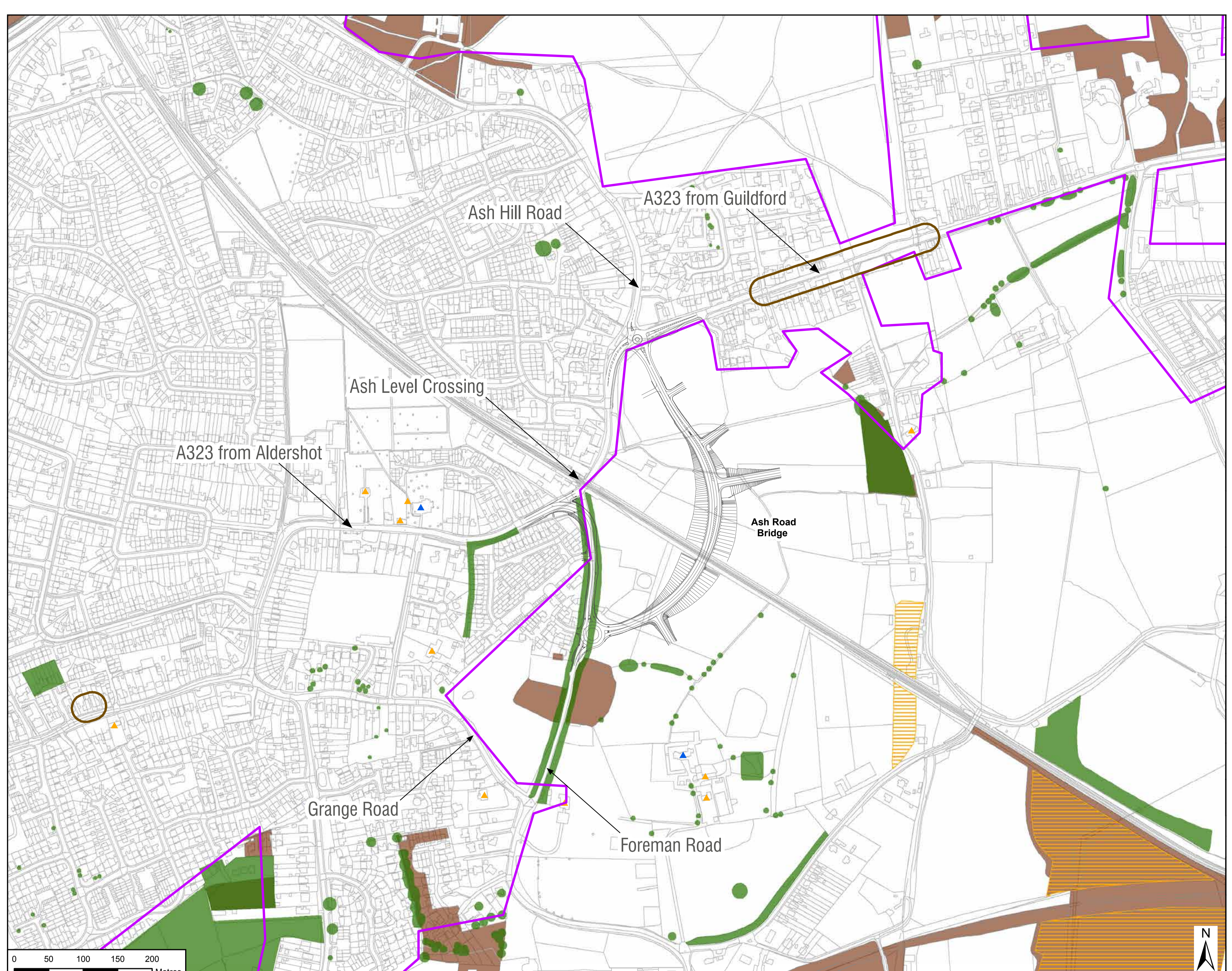
GUILDFORD  
BOROUGH



# Ash Road Bridge

## Environmental design and assessment

- Listed Building
- ▲ Grade I
  - ▲ Grade II
  - ▲ Grade II\*
- Ancient Woodland
- Deciduous Woodland
- Noise Important Area
- Surrey Hills Area of Great Landscape Value
- Tree Preservation Orders



Environmental baseline surveys have been undertaken to develop an understanding of the existing environment. The findings of these surveys have been used to inform the design development, and will help to identify potential environmental impacts during construction and operation of the proposed scheme.

**Assessments on the below topics will be submitted as part of the planning application.**

**Following submission, you will be able to view and comment on all Ash Road Bridge planning documentation on Guildford Borough Council's website at:**  
<https://guildford.gov.uk/searchforaplanningapplication>

### Air quality

While traffic volumes are not expected to change significantly, the speed of traffic and the location of the emission sources will change. An air quality assessment report will identify potential impacts and any required mitigation measures. This will include nitrogen dioxide monitoring and a dust risk assessment during the construction phase.

### Ecology

Ecological surveys in relation to habitats and protected or notable species have been conducted within the area of the proposed scheme. Based on the findings, mitigation measures during construction have been proposed and are likely to include incorporation of compensatory reptile habitat; reptile translocation; a precautionary working method for felling trees and a precautionary working method in relation to nesting birds during vegetation clearance.

### Heritage

There is potential for obscured views of the scheme from the Grade II listed Ash Manor and Old Manor Cottage through the winter months when the trees are not in leaf. A combination of new planting, separation distance and the limited extent and height of the proposed scheme would reduce any setting impacts on Ash Manor and Old Manor Cottage. Historic mapping indicates that there has been little development of the site since 1873. Although no archaeology has been found adjacent to the site, an assessment of the heritage assets is underway, and if necessary, mitigation measures will be specified.

### Landscape

A landscape and visual impact assessment (LVIA) is being undertaken to take account of new infrastructure (including lighting), identify existing landscape and visual receptors, and specify planting and landscaping requirements. It is expected that these requirements will be effectively managed given the new planting, the localised extent of the proposed development and the area's ability to accommodate change.

### Noise impact

Changes to traffic patterns as well as the realignment of the road will also result in changes to the noise environment for existing residents in the area. Existing baseline noise levels have been measured, and details of any predicted noise level changes during construction and once the proposed scheme is operational will be included as part of a noise assessment report.

### Surface water drainage

A flood risk assessment is being undertaken and a surface water drainage strategy developed in order to identify where features to control the flow of water may be required, such as attenuation ponds and flood compensation storage. These will be included within the design of the proposed scheme.

[www.guildford.gov.uk](http://www.guildford.gov.uk)



GUILDFORD  
BOROUGH



# Ash Road Bridge

## Construction and operation

### Construction phase

Guildford Borough Council expects to submit a planning application in spring 2019. Subject to securing planning consent, construction will begin in spring 2020 with completion of the road bridge targeted by 2021.

We will do all we can to limit the impact on local residents and road users; however there will be temporary traffic impacts over the construction period, including an increase in traffic movements and temporary road works (including Foreman Road, Guildford Road / Ash Hill Road roundabout and Guildford Road / Foreman Road junction).

A full Construction Environment Management Plan will be prepared to support the delivery of the scheme, which will include a full traffic management plan. A framework will be submitted as part of the planning application. Key measures to mitigate the impact of traffic on local residents will include:

- Working within agreed operational hours
- Designated routes for construction traffic (avoiding inappropriate residential and rural roads)
- Restricting the hours of travel for construction traffic
- Re-use of materials where feasible on site to reduce the number of traffic movements
- Keeping the level crossing open until the new bridge is completed, to avoid the need to divert traffic
- Appropriate onsite parking for contractors
- Ongoing updates for local residents

### Operational phase

The key traffic features of the scheme are as follows:

- Diversion of the A323 across a new road bridge to remove the delay associated with the Ash Level Crossing and to improve journey time reliability (please note: Surrey County Council as the Highways Authority will maintain and operate the road once completed)
- Overall reduction in traffic cutting through inappropriate residential and rural roads to avoid the level crossing
- Widening of Foreman Road to 7.3 metres, implementation of parking restrictions and a reduction in speed limit to 30mph between Guildford Road and the new roundabout
- Improved pedestrian and cycle facilities along Foreman Road and linkages between the development to the south and Ash Station
- Relocation of existing bus stops on A323 Guildford Road, which will include improved passenger waiting facilities

A Transport Assessment is being prepared to support the planning application for the Ash Road Bridge scheme. A series of traffic surveys have been completed over the past two years to support the scheme (recording movements, journey times and queuing).

The Transport Assessment explores the level of traffic predicted in the future with and without the proposed scheme. Mitigation is to be provided (in agreement with Surrey County Council) where impacts associated with the scheme are determined.



Foreman Road (looking north)



# Ash Road Bridge

## Next steps

### Ash Road Bridge – Project timeline:

2017:	Review of Ash Road Bridge route options
SPRING 2018:	Selection of preferred alignment
SUMMER 2018 to SPRING 2019:	Baseline surveys and investigations
<b>JANUARY 2019:</b>	Exhibitions showing Ash Road Bridge planning application proposal
SPRING 2019:	Planning application due to be submitted
SUMMER 2019:	Ash Road Bridge planning application determined
AUTUMN to WINTER 2019:	Detailed design and planning condition discharge
SPRING 2020:	Construction due to start
2021:	Ash Road Bridge due to open and Ash Level Crossing closed to motor vehicles

**Thank you for attending our Public Information Event.**

**Please take the time to complete a feedback form to give us your views on the proposals for Ash Road Bridge.**

**You can fill one out here today or take one away and post it back to us at:**

**Guildford Borough Council  
Millmead House, Millmead, Guildford, Surrey GU2 4BB**

**You can also email your comments to: [major.projects@guildford.gov.uk](mailto:major.projects@guildford.gov.uk)**

**Following the submission of a planning application Guildford Borough Council's Planning Department will undertake a statutory consultation (three weeks).**

**Comments can be submitted on the final application online. Further updates on the scheme will be made available on the Council website.**

**Visit [www.guildford.gov.uk](http://www.guildford.gov.uk)**

[www.guildford.gov.uk](http://www.guildford.gov.uk)



**GUILD FORD  
B O R O U G H**