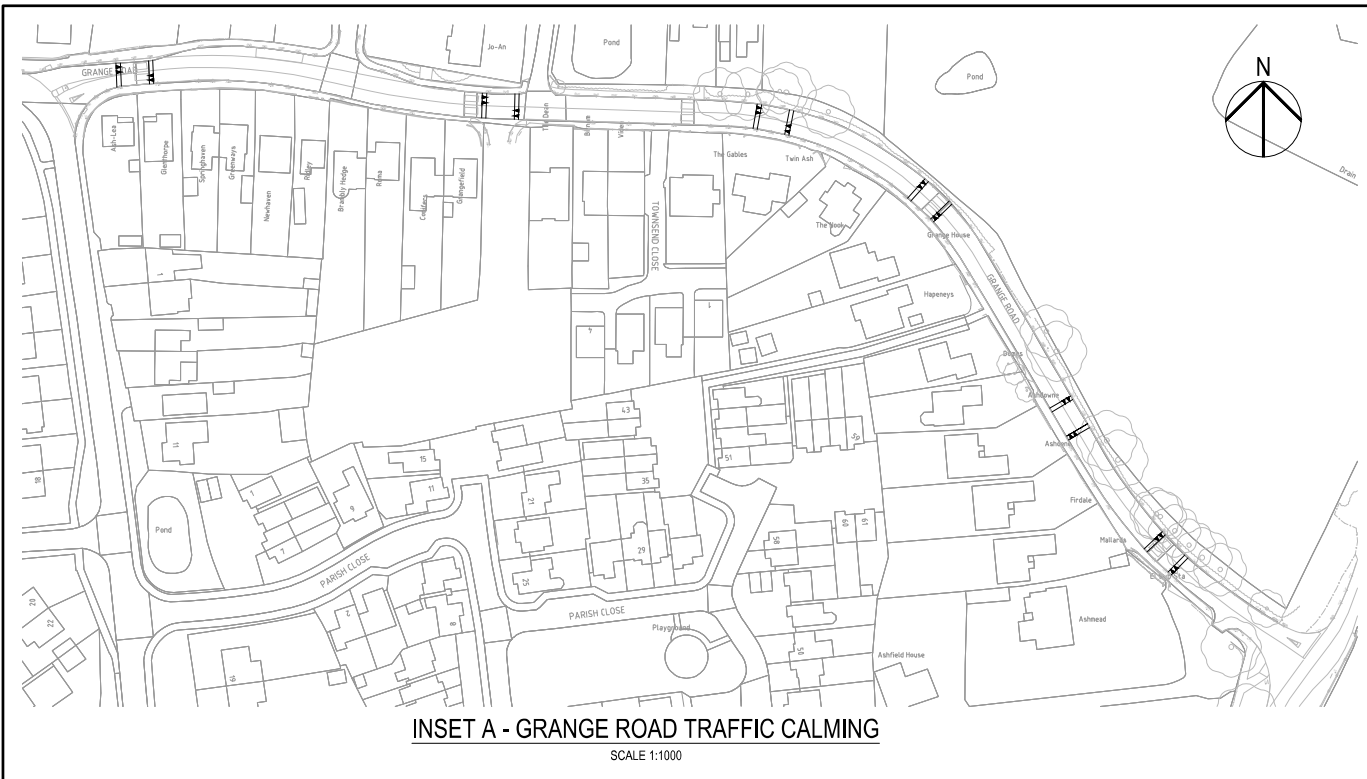


1. THIS DRAWING IS TO BE READ IN CONJUNCTION WITH ALL RELEVANT ARCHITECTS, ENGINEERS, SERVICES AND SPECIALIST DRAWINGS AND SPECIFICATION.
2. ANY DISCREPANCIES IN DIMENSIONS OR DETAILS ON OR BETWEEN THESE DRAWINGS SHOULD BE DRAWN TO THE ATTENTION OF THE ARCHITECT AND/OR THE ENGINEER FOR CLARIFICATION.
3. ALL DIMENSIONS ARE IN METRES UNLESS NOTED OTHERWISE.
4. DO NOT SCALE THIS DRAWING.

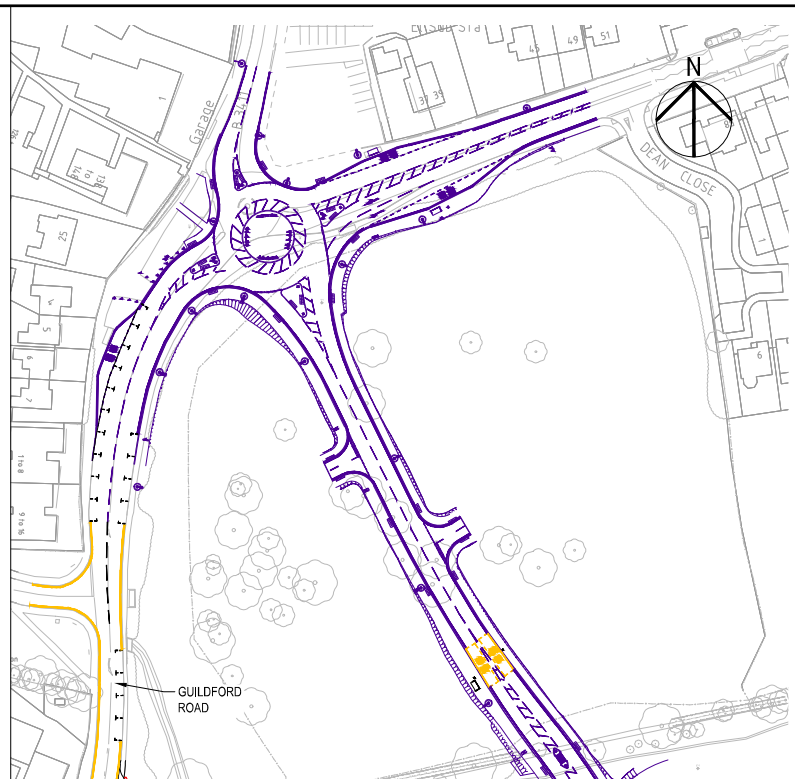
SECTION 278
SECTION 38

I/R	DATE	DESCRIPTION
P02	01.07.2021	Boundaries Revised
P01	04.06.2021	First Issue

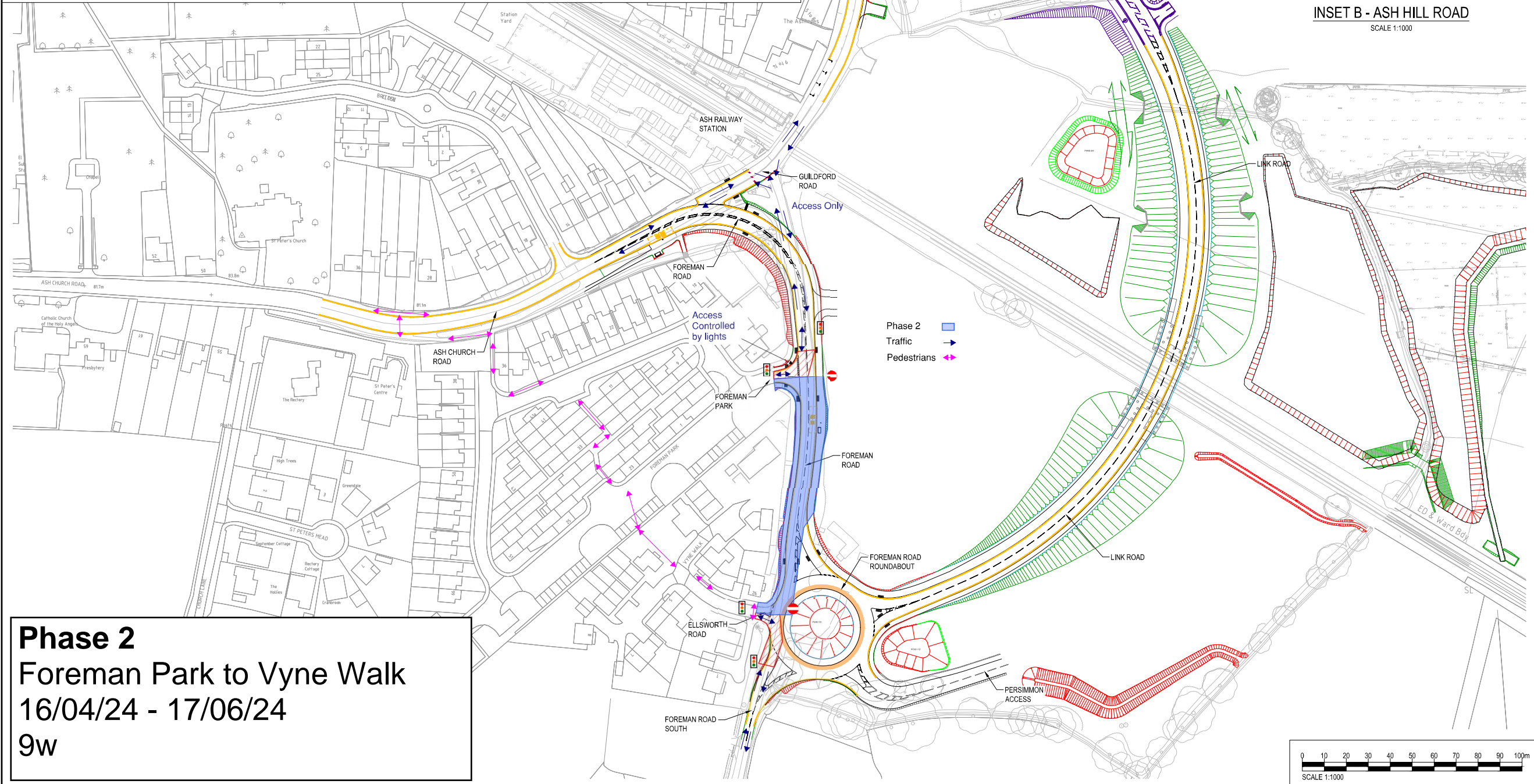
This drawing has been prepared for the use of AECOM's client. It may not be used, modified, reproduced or relied upon by third parties, except as agreed by AECOM or as required by law. AECOM accepts no responsibility, and denies any liability, whatsoever, to any party that uses or relies on this drawing without AECOM's express written consent. Do not scale this document. All measurements must be obtained from the stated dimensions.



**INSET A - GRANGE ROAD TRAFFIC CALMING**  
SCALE 1:1000



**INSET B - ASH HILL ROAD**  
SCALE 1:1000



**Phase 2**  
**Foreman Park to Vyne Walk**  
**16/04/24 - 17/06/24**  
**9w**

**AECOM**

**PROJECT**  
 Ash Road Bridge

**CLIENT**  
 Guildford Borough Council

**CONSULTANT**  
 AECOM Limited  
 Midpoint, Alencon Link,  
 Basingstoke, Hampshire, RG21 7PP  
 +44 (0)1256 824 500 tel  
 www.aecom.com

- GENERAL NOTES**
1. THIS DRAWING IS TO BE READ IN CONJUNCTION WITH ALL RELEVANT ARCHITECTS, ENGINEERS, SERVICES AND SPECIALIST DRAWINGS AND SPECIFICATION.
  2. ANY DISCREPANCIES IN DIMENSIONS OR DETAILS ON OR BETWEEN THESE DRAWINGS SHOULD BE DRAWN TO THE ATTENTION OF THE ARCHITECT AND/OR THE ENGINEER FOR CLARIFICATION.
  3. ALL DIMENSIONS ARE IN METRES UNLESS NOTED OTHERWISE.
  4. DO NOT SCALE THIS DRAWING.

**KEY**

SECTION 278  
 SECTION 38

**ISSUE/REVISION**

I/R	DATE	DESCRIPTION
P02	01.07.2021	Boundaries Revised
P01	04.06.2021	First Issue

**SUITABILITY**  
 For Information

**PROJECT NUMBER**  
 60651410

**SHEET TITLE**  
 Section 38 and Section 278  
 Boundaries

**SHEET NUMBER**  
 60651410-ACM-XX-XX-DR-ZZ-000003

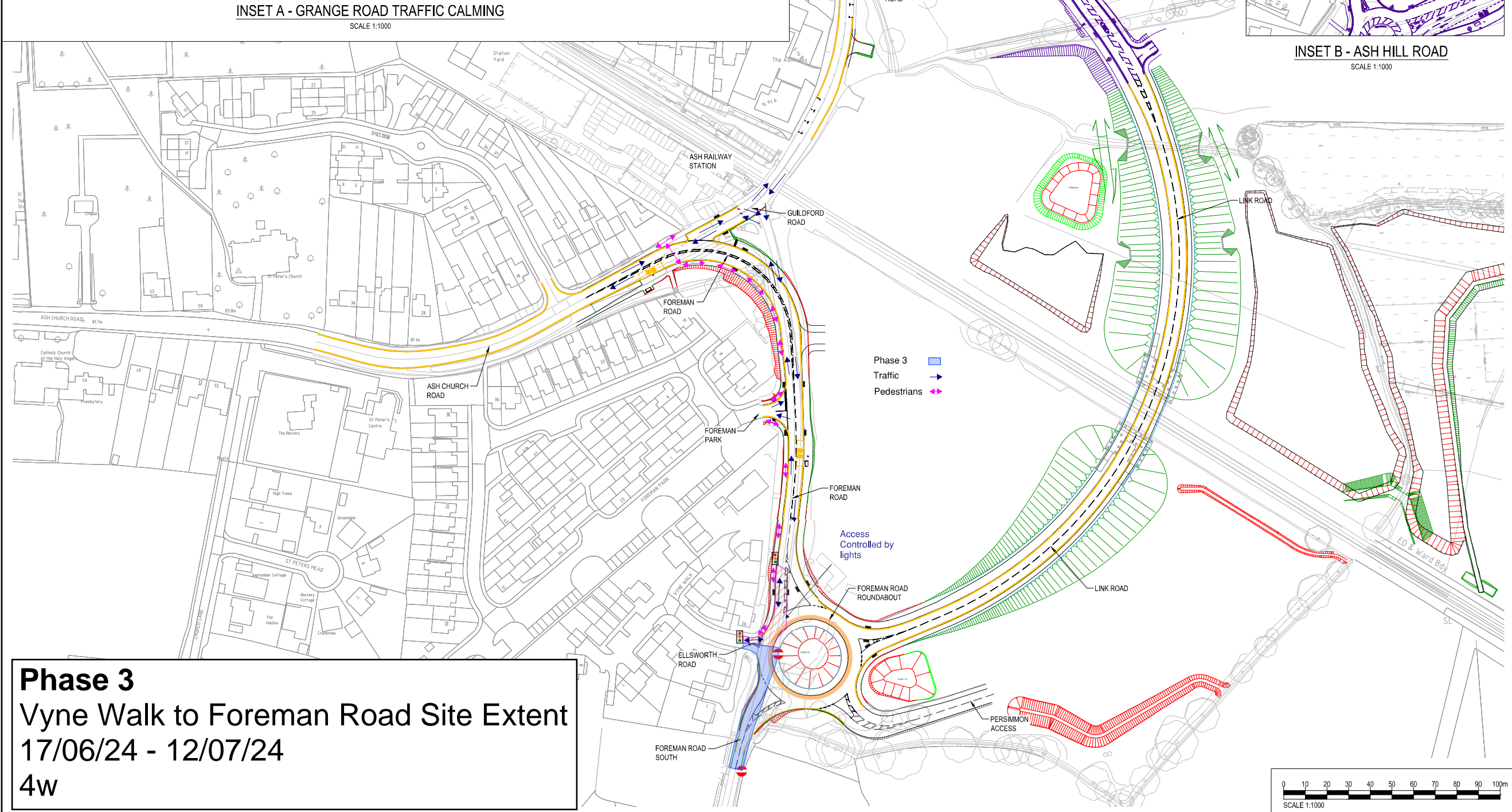
This drawing has been prepared for the use of AECOM's client. It may not be used, modified, reproduced or relied upon by third parties, except as agreed by AECOM or as required by law. AECOM accepts no responsibility, and denies any liability, whatsoever, to any party that uses or relies on this drawing without AECOM's express written consent. Do not scale this document. All measurements must be obtained from the stated dimensions.



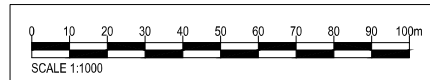
**INSET A - GRANGE ROAD TRAFFIC CALMING**  
SCALE 1:1000



**INSET B - ASH HILL ROAD**  
SCALE 1:1000



**Phase 3**  
**Vyne Walk to Foreman Road Site Extent**  
**17/06/24 - 12/07/24**  
**4w**



**AECOM**

**PROJECT**  
 Ash Road Bridge

**CLIENT**  
 Guildford Borough Council

**CONSULTANT**  
 AECOM Limited  
 Midpoint, Alencon Link,  
 Basingstoke, Hampshire, RG21 7PP  
 +44 (0)1256 824 500 tel  
 www.aecom.com

- GENERAL NOTES**
1. THIS DRAWING IS TO BE READ IN CONJUNCTION WITH ALL RELEVANT ARCHITECTS, ENGINEERS, SERVICES AND SPECIALIST DRAWINGS AND SPECIFICATION.
  2. ANY DISCREPANCIES IN DIMENSIONS OR DETAILS ON OR BETWEEN THESE DRAWINGS SHOULD BE DRAWN TO THE ATTENTION OF THE ARCHITECT AND/OR THE ENGINEER FOR CLARIFICATION.
  3. ALL DIMENSIONS ARE IN METRES UNLESS NOTED OTHERWISE.
  4. DO NOT SCALE THIS DRAWING.

**KEY**

SECTION 278  
 SECTION 38

**ISSUE/REVISION**

I/R	DATE	DESCRIPTION
P02	01.07.2021	Boundaries Revised
P01	04.06.2021	First Issue

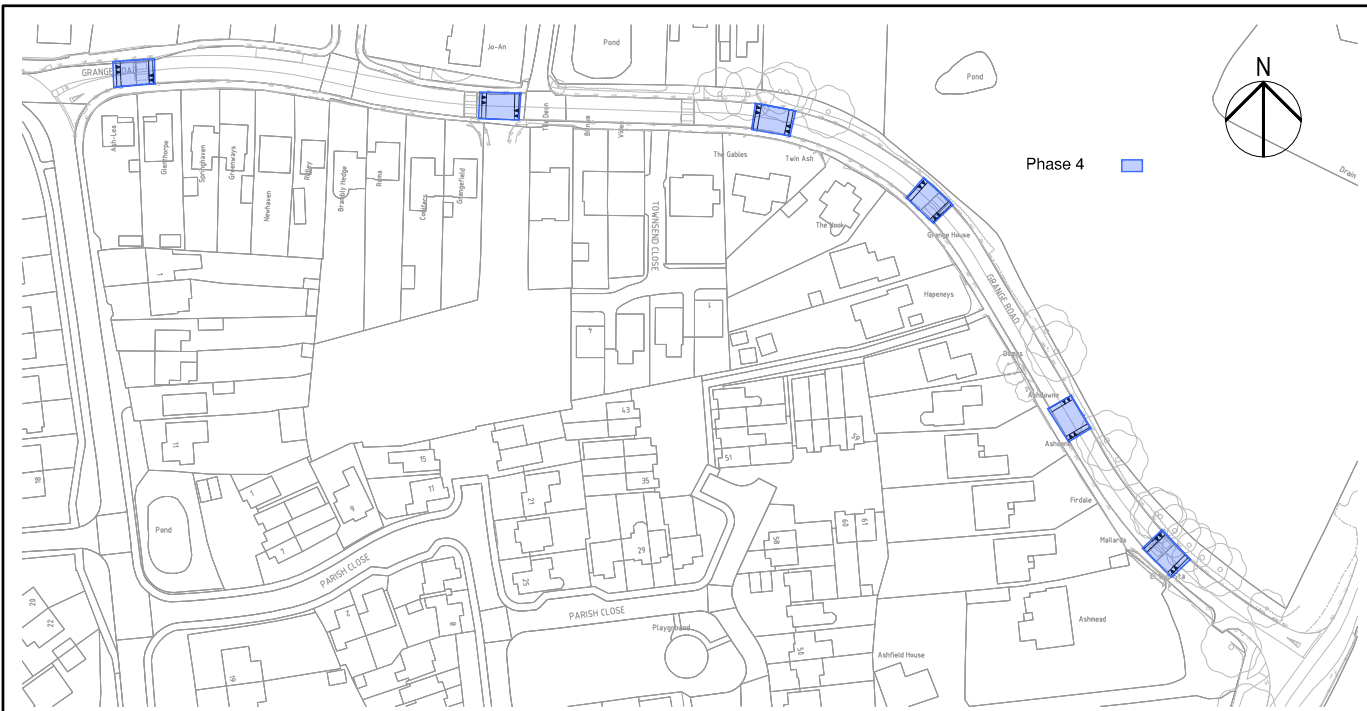
**SUITABILITY**  
 For Information

**PROJECT NUMBER**  
 60651410

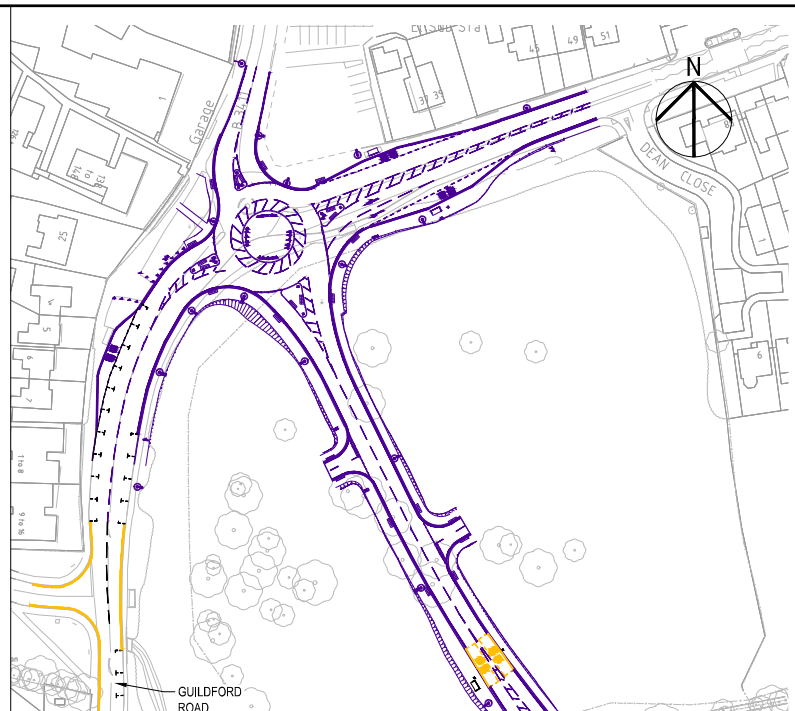
**SHEET TITLE**  
 Section 38 and Section 278  
 Boundaries

**SHEET NUMBER**  
 60651410-ACM-XX-XX-DR-ZZ-000003

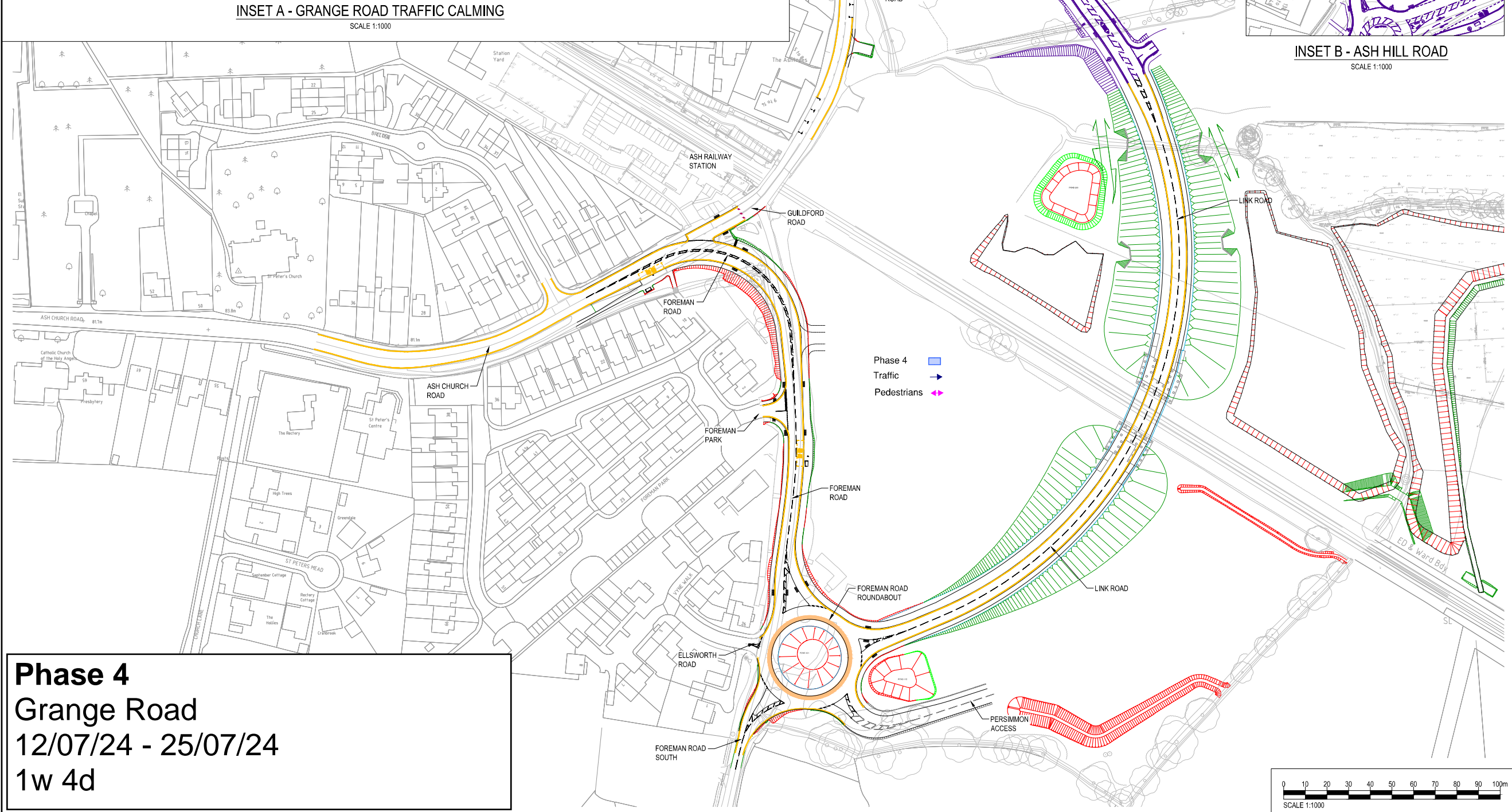
This drawing has been prepared for the use of AECOM's client. It may not be used, modified, reproduced or relied upon by third parties, except as agreed by AECOM or as required by law. AECOM accepts no responsibility, and denies any liability, whatsoever, to any party that uses or relies on this drawing without AECOM's express written consent. Do not scale this document. All measurements must be obtained from the stated dimensions.



**INSET A - GRANGE ROAD TRAFFIC CALMING**  
SCALE 1:1000



**INSET B - ASH HILL ROAD**  
SCALE 1:1000



**Phase 4**  
**Grange Road**  
**12/07/24 - 25/07/24**  
**1w 4d**

1. THIS DRAWING IS TO BE READ IN CONJUNCTION WITH ALL RELEVANT ARCHITECTS, ENGINEERS, SERVICES AND SPECIALIST DRAWINGS AND SPECIFICATION.
2. ANY DISCREPANCIES IN DIMENSIONS OR DETAILS ON OR BETWEEN THESE DRAWINGS SHOULD BE DRAWN TO THE ATTENTION OF THE ARCHITECT AND/OR THE ENGINEER FOR CLARIFICATION.
3. ALL DIMENSIONS ARE IN METRES UNLESS NOTED OTHERWISE.
4. DO NOT SCALE THIS DRAWING.

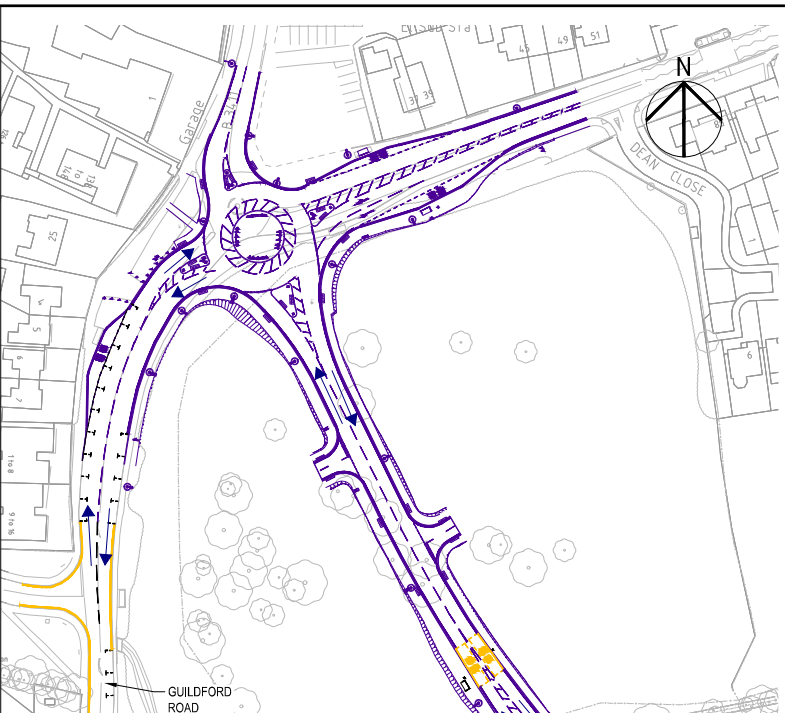
SECTION 278  
SECTION 38

I/R	DATE	DESCRIPTION
P02	01.07.2021	Boundaries Revised
P01	04.06.2021	First Issue

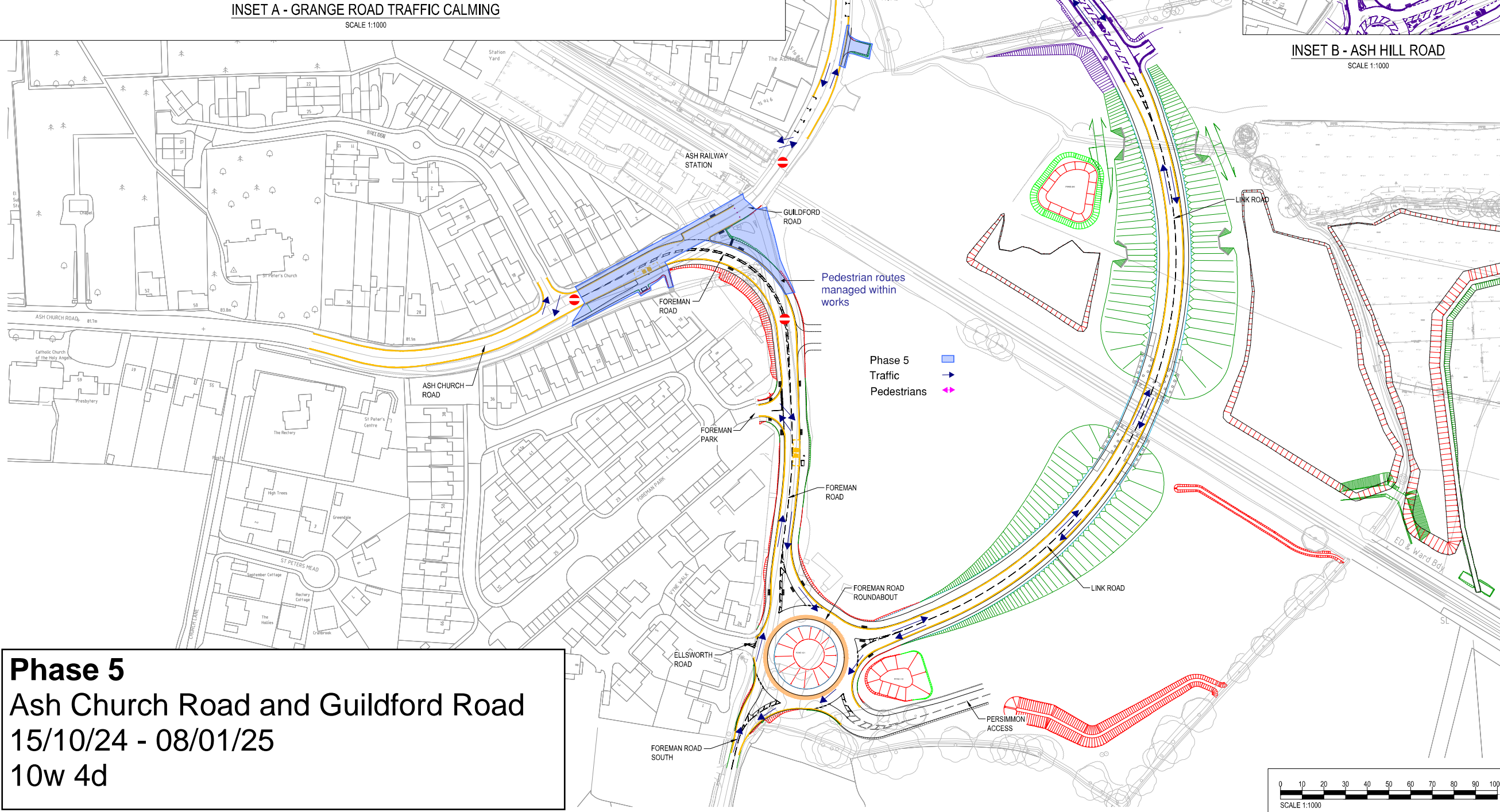
This drawing has been prepared for the use of AECOM's client. It may not be used, modified, reproduced or relied upon by third parties, except as agreed by AECOM or as required by law. AECOM accepts no responsibility, and denies any liability, whatsoever, to any party that uses or relies on this drawing without AECOM's express written consent. Do not scale this document. All measurements must be obtained from the stated dimensions.



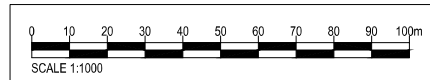
**INSET A - GRANGE ROAD TRAFFIC CALMING**  
SCALE 1:1000



**INSET B - ASH HILL ROAD**  
SCALE 1:1000



**Phase 5**  
**Ash Church Road and Guildford Road**  
**15/10/24 - 08/01/25**  
**10w 4d**



1. THIS DRAWING IS TO BE READ IN CONJUNCTION WITH ALL RELEVANT ARCHITECTS, ENGINEERS, SERVICES AND SPECIALIST DRAWINGS AND SPECIFICATION.
2. ANY DISCREPANCIES IN DIMENSIONS OR DETAILS ON OR BETWEEN THESE DRAWINGS SHOULD BE DRAWN TO THE ATTENTION OF THE ARCHITECT AND/OR THE ENGINEER FOR CLARIFICATION.
3. ALL DIMENSIONS ARE IN METRES UNLESS NOTED OTHERWISE.
4. DO NOT SCALE THIS DRAWING.

SECTION 278  
 SECTION 38

I/R	DATE	DESCRIPTION
P02	01.07.2021	Boundaries Revised
P01	04.06.2021	First Issue

This drawing has been prepared for the use of AECOM's client. It may not be used, modified, reproduced or relied upon by third parties, except as agreed by AECOM, or as required by law. AECOM accepts no responsibility, and denies any liability, whatsoever, to any party that uses or relies on this drawing without AECOM's express written consent. Do not scale this document. All measurements must be obtained from the stated dimensions.