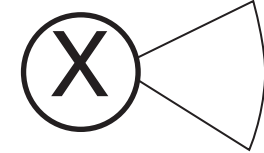
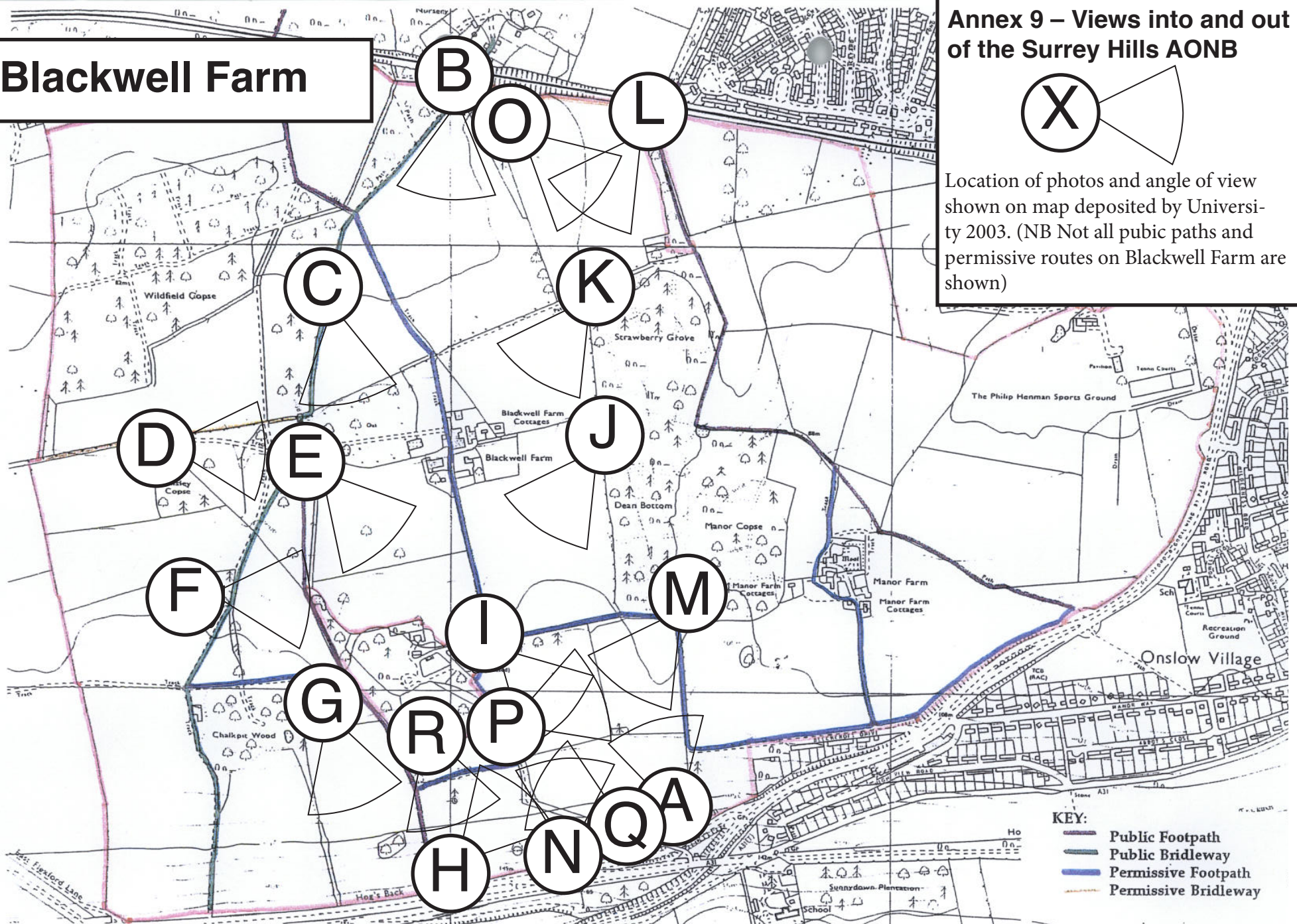


Blackwell Farm

Annex 9 – Views into and out of the Surrey Hills AONB



Location of photos and angle of view shown on map deposited by University 2003. (NB Not all public paths and permissive routes on Blackwell Farm are shown)



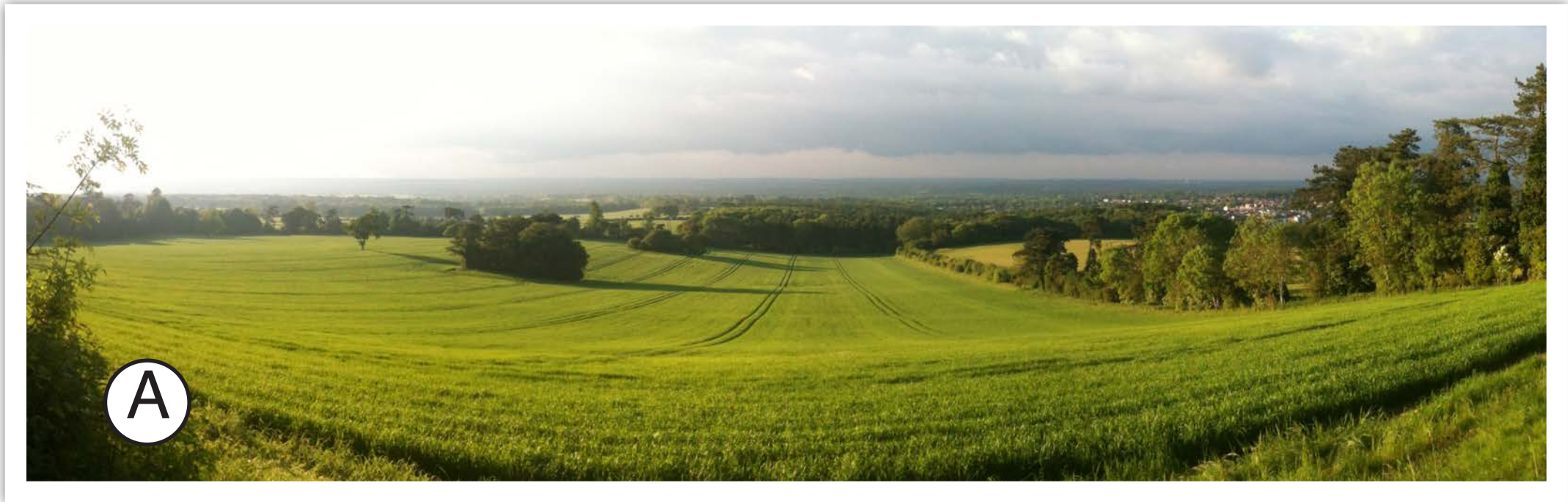


Photo A - View from Down Place drive from AONB (looking North). The UniS is planning to put a road along the eastern edge of this field and build sports pitches on the lower slopes.



Photo B - View from public bridleway pointing south towards the ridge and land designated AONB.

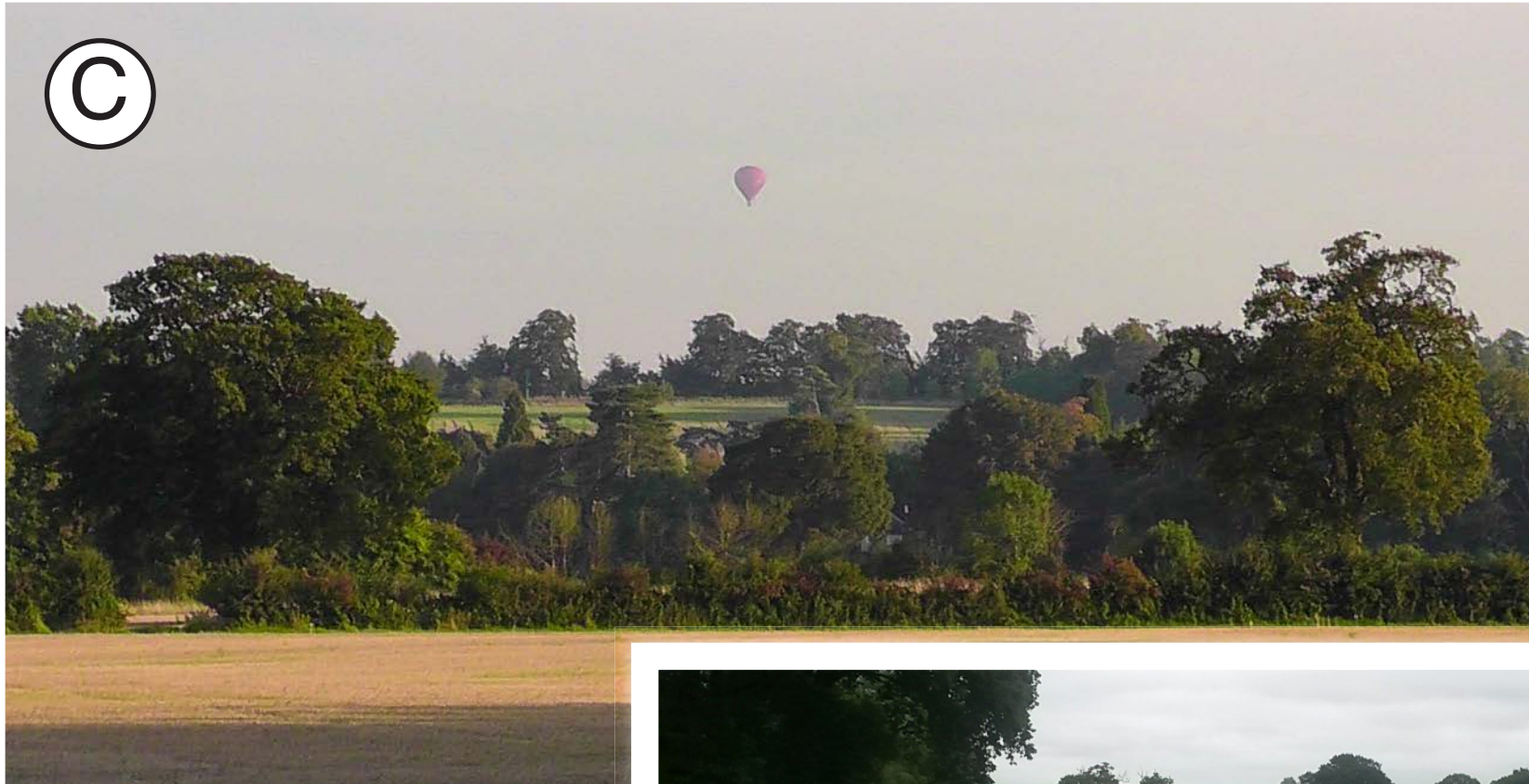


Photo C - View from public bridleway pointing south to land designated AONB.

Photo D - View from public bridleway looking east towards ancient woodland and AONB on the right of the view (masts on the Mount are visible).



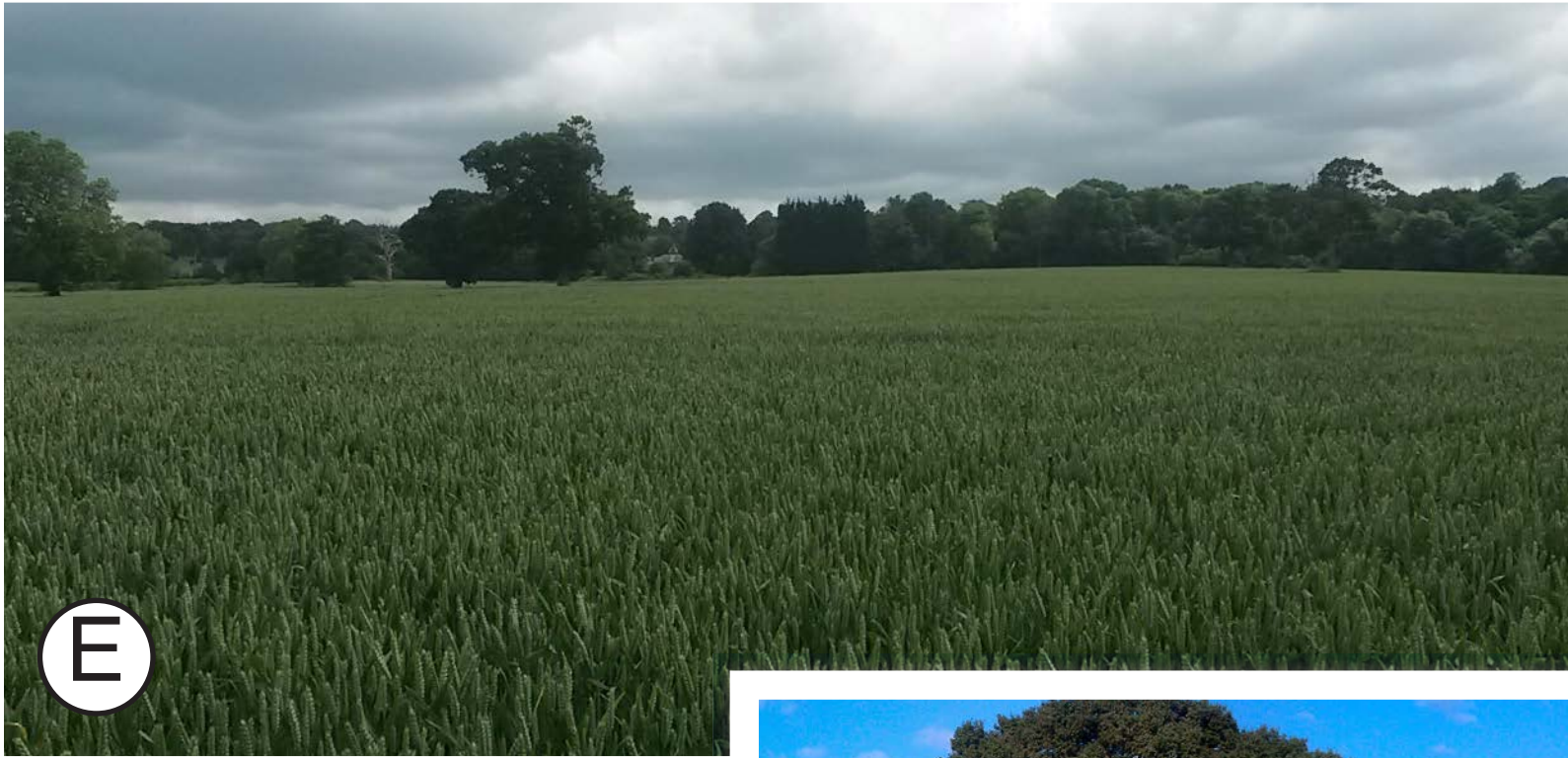


Photo E - View from public footpath looking south towards Down Place and the AONB. The southern part of this field is designated AGLV.

Photo F - View from public footpath looking east towards ancient woodland and AONB on the right. The hedge in the foreground indicates the proposed new urban boundary.





Photo G - View from public footpath looking south towards the AONB.



Photo H - Taken from ridge of Hog's Back across the proposed development area and is the similar view for vehicles along the A31 eastbound. The railway line passes in the dip in front of the white property in the distance (Chapel House Farm).



Photo I - View towards Hog's Back ridge/AONB. GBC has responded to consultation by excluding this field from its Local Plan, so the UniS is proposing sports pitches in this field and the access road along its edge.

Photo J - View from the edge of the ancient woodland showing the Hog's Back ridge in the distance.



Photo K - View from the edge of the ancient woodland showing the Hog's Back ridge in the distance.



Photo L - View from the north east corner of the proposed development area (earmarked for extension of the business park) and shows the Hog's Back ridge/AONB in distance. This same view is visible from the trains passing alongside this field.



K

L

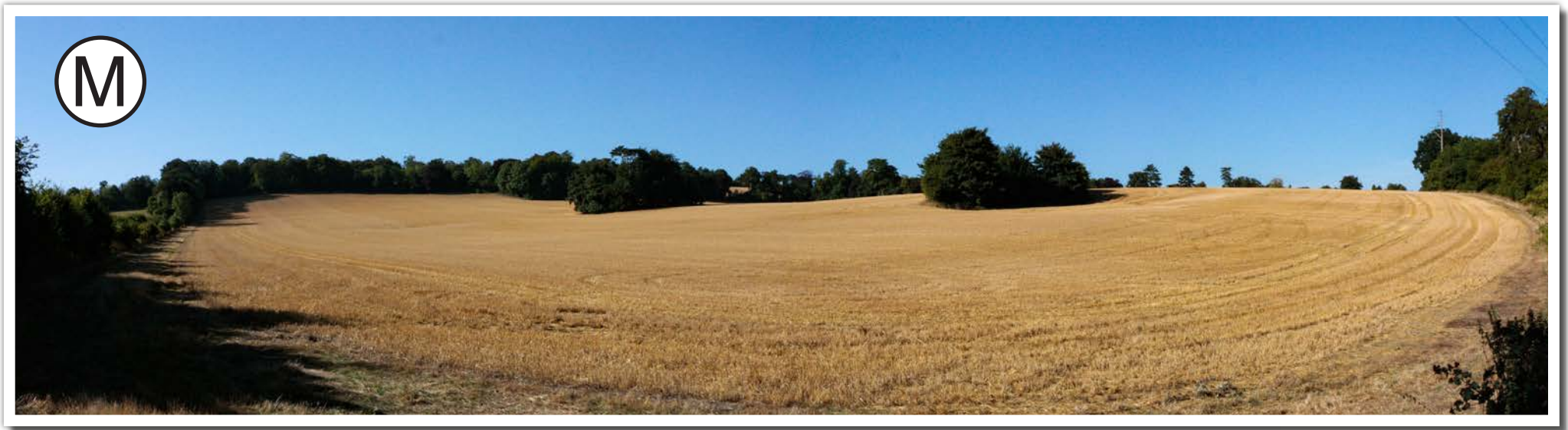


Photo M - View from footpath towards AONB. GBC has responded to consultation by excluding AONB and this field from its Local Plan, so the UniS is proposing to build sports pitches in this field and the access road along its edge.

Photo N - View looking north from AONB (from Hog's Back ridge) across Blackwell Farm





O

Photo O - Panoramic view showing belt of ancient woodland with railway line passing on the left and AONB visible to the right. The Surrey Research Park is behind this belt of trees and the Cathedral is clearly visible above.

Photo P - Views across AGLV with the Cathedral beyond.



P



Q



Photos Q - Two pictures along the existing Down Place drive. Snow falls on slopes of the Hogs Back and the driveway is often cut-off when there is snow.



Photo R - Views from footpath to the south and AONB. The proposed line of the access along the slopes of the Hog's Back (parallel to Down Place) will turn and pass along the left side of this photograph.